

## Anti-S100A6 antibody (1-90 aa) (STJ11106830)

### GENERAL INFORMATION

Product Type	Primary antibodies
Applications	WB/IHC-P/IF/ICC/IP/ELISA
Host / Source	Rabbit
Reactivity	Human/Mouse/Rat

### PRODUCT PROPERTIES

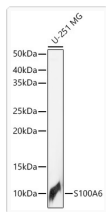
Clonality	Polyclonal
Concentration	Lot specific
Conjugation	Unconjugated
Purification	Affinity purification
Dilution Range	WB:1:500-1:1000 IHC-P:1:50-1:200 IF/CC:1:50-1:200 IP:0.5 µg-4 µg antibody for 200 µg-400 µg extracts of whole cells ELISA:Recommended starting concentration is 1 µg/mL. Please optimize the concentration based on your specif
Formulation	PBS with 0.02% Sodium Azide, 50% Glycerol, pH 7.3.
Isotype	IgG
Molecular Weight	Protein Mw: 10kDa Observed Mw: 10kDa
Storage Instruction	Store at-20°C for up to 1 year from the date of receipt, and avoid repeat freeze-thaw cycles.

### TARGET INFORMATION

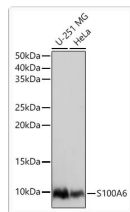
Gene ID	<a href="#">6277</a>
Gene Symbol	<a href="#">S100A6</a>
UniProt ID	<a href="#">S10A6_HUMAN</a>
Immunogen Region	1-90 aa
Immunogen Sequence	MACPLDQAIGLLVAIFHKYS GREGDKHTLSKKEKELIQK ELTIGSKLQDAEIARLMEDL DRNKDQEVNFMQYVTFGLGAL ALIYNEALKG
Specificity	Recombinant fusion protein containing a sequence corresponding to amino acids 1-90 of human S100A6 (NP_055439.1).

### ADDITIONAL INFORMATION

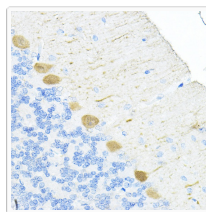
Note	STRICTLY FOR FURTHER SCIENTIFIC RESEARCH USE ONLY (RUO). MUST NOT TO BE USED IN DIAGNOSTIC OR THERAPEUTIC APPLICATIONS.
------	---



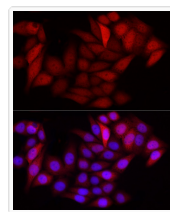
Western blot analysis of lysates from U-251 MG cells using S100A6 Rabbit pAb (STJ11106830) at 1:1000 dilution.  
 Secondary antibody: HRP-conjugated Goat anti-Rabbit IgG (H+L) (STJS000856) at 1:10000 dilution.  
 Lysates/proteins: 25 Mu g per lane.  
 Blocking buffer: 3% nonfat dry milk in TBST.  
 Detection: ECL Basic Kit  
 Exposure time: 3s.



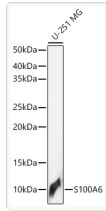
Western blot analysis of various lysates using S100A6 Rabbit pAb (STJ11106830) at 1:1000 dilution.  
 Secondary antibody: HRP-conjugated Goat anti-Rabbit IgG (H+L) (STJS000856) at 1:10000 dilution.  
 Lysates/ proteins: 25 Mu g per lane.  
 Blocking buffer: 3 % nonfat dry milk in TBST.  
 Detection: ECL Basic Kit  
 Exposure time: 1s.



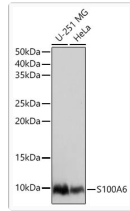
Immunohistochemistry analysis of paraffin-embedded Rat cerebellum using S100A6 Rabbit pAb (STJ11106830) at dilution of 1:100 (40x lens). High pressure antigen retrieval performed with 0. 01M Citrate Bufferr (pH 6. 0) prior to immunohistochemistry staining.



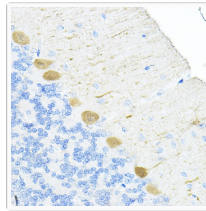
Immunofluorescence analysis of HeLa cells using S100A6 Rabbit pAb (STJ11106830) at dilution of 1:100 (40x lens). Secondary antibody: Cy3-conjugated Goat anti-Rabbit IgG (H+L) (STJS001166) at 1:500 dilution. Blue: DAPI for nuclear staining.



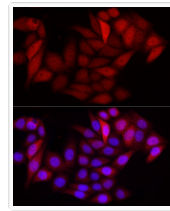
Western blot analysis of lysates from U-251 MG cells using S100A6 Rabbit pAb (STJ11106830) at 1:1000 dilution.  
 Secondary antibody: HRP-conjugated Goat anti-Rabbit IgG (H+L) (STJS000856) at 1:10000 dilution.  
 Lysates/proteins: 25 Mu g per lane.  
 Blocking buffer: 3% nonfat dry milk in TBST.  
 Detection: ECL Basic Kit  
 Exposure time: 3s.



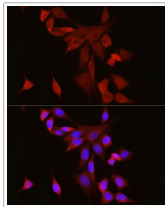
Western blot analysis of various lysates using S100A6 Rabbit pAb (STJ11106830) at 1:1000 dilution.  
 Secondary antibody: HRP-conjugated Goat anti-Rabbit IgG (H+L) (STJS000856) at 1:10000 dilution.  
 Lysates/ proteins: 25 Mu g per lane.  
 Blocking buffer: 3 % nonfat dry milk in TBST.  
 Detection: ECL Basic Kit  
 Exposure time: 1s.



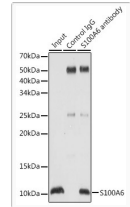
Immunohistochemistry analysis of paraffin-embedded Rat cerebellum using S100A6 Rabbit pAb (STJ11106830) at dilution of 1:100 (40x lens). High pressure antigen retrieval performed with 0. 01M Citrate Bufferr (pH 6. 0) prior to immunohistochemistry staining.



Immunofluorescence analysis of HeLa cells using S100A6 Rabbit pAb (STJ11106830) at dilution of 1:100 (40x lens). Secondary antibody: Cy3-conjugated Goat anti-Rabbit IgG (H+L) (STJS001166) at 1:500 dilution. Blue: DAPI for nuclear staining.



Immunofluorescence analysis of NIH/3T3 cells using S100A6 Rabbit pAb (STJ11106830) at dilution of 1:100 (40x lens). Secondary antibody: Cy3-conjugated Goat anti-Rabbit IgG (H+L) (STJS001166) at 1:500 dilution. Blue: DAPI for nuclear staining.



Immunoprecipitation analysis of 200 Mu g extracts of U-251MG cells using 3 Mu g S100A6 antibody (STJ11106830). Western blot was performed from the immunoprecipitate using S100A6 antibody (STJ11106830) at a dilution of 1:1000.