

Anti-MTMR14 antibody (1-280 aa) (STJ11106808)

GENERAL INFORMATION

Product Type	Primary antibodies
Applications	WB/ELISA
Host / Source	Rabbit
Reactivity	Human/Mouse

PRODUCT PROPERTIES

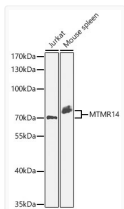
Clonality	Polyclonal
Concentration	Lot specific
Conjugation	Unconjugated
Purification	Affinity purification
Dilution Range	WB:1:500-1:1000 ELISA:Recommended starting concentration is 1 µg/mL. Please optimize the concentration based on your specific assay requirements.
Formulation	PBS with 0.02% Sodium Azide, 50% Glycerol, pH 7.3.
Isotype	IgG
Molecular Weight	Protein Mw: 72kDa Observed Mw: 72kDa
Storage Instruction	Store at -20°C for up to 1 year from the date of receipt, and avoid repeat freeze-thaw cycles.

TARGET INFORMATION

Gene ID	64419
Gene Symbol	MTMR14
UniProt ID	MTMRE_HUMAN
Immunogen Region	1-280 aa
Immunogen Sequence	MAGARAAAAAASAGSSASSG NQPPQELGLGELLEFSRTQ YRAKDGSGTGGSKVERIEKR CLELFGDRDYCFSVIPNTNGD ICGHYPRHIVFLEYESSEKE KDTFESTVQVSKLQDLIHR KMARCRGRFVCPVILFKGKH ICRSATLAGWGELYGRSGYN YFFSGGADDAWADVETEE DCALRSGDTHLFDKVRGYDI KLLRYLSVKYICDLMVENKK VKFGMNVTSSEKVDKAQRY
Specificity	Recombinant fusion protein containing a sequence corresponding to amino acids 1-280 of human MTMR14 (NP_001070993.1).

ADDITIONAL INFORMATION

Note **STRICTLY FOR FURTHER SCIENTIFIC RESEARCH USE ONLY (RUO). MUST NOT TO BE USED IN DIAGNOSTIC OR THERAPEUTIC APPLICATIONS.**



Western blot analysis of various lysates using MTMR14 Rabbit pAb (STJ11106808) at 1:1000 dilution.

Secondary antibody: HRP Goat Anti-Rabbit IgG (H+L) (STJS000856) at 1:10000 dilution.

Lysates/ proteins: 25 µg per lane.

Blocking buffer: 3% nonfat dry milk in TBST.

Detection: ECL Basic Kit

Exposure time: 90s.