

Anti-PRPS1 antibody (250-322 aa) (STJ11106806)

GENERAL INFORMATION

Product Type	Primary antibodies
Applications	WB/ELISA
Host / Source	Rabbit
Reactivity	Human/Mouse

PRODUCT PROPERTIES

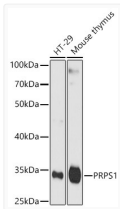
Clonality	Polyclonal
Concentration	Lot specific
Conjugation	Unconjugated
Purification	Affinity purification
Dilution Range	WB:1:500-1:2000 ELISA:Recommended starting concentration is 1 µg/mL. Please optimize the concentration based on your specific assay requirements.
Formulation	PBS with 0.02% Sodium Azide, 50% Glycerol, pH 7.3.
Isotype	IgG
Molecular Weight	Protein Mw: 35kDa Observed Mw: 35kDa
Storage Instruction	Store at -20°C for up to 1 year from the date of receipt, and avoid repeat freeze-thaw cycles.

TARGET INFORMATION

Gene ID	5631
Gene Symbol	PRPS1
UniProt ID	PRPS1_HUMAN
Immunogen Region	250-322 aa
Immunogen Sequence	HGIFSGPAISRINNACFEAV VVTNTIPQEDKMKHCKSIQV IDISMILAEAIRRTHNGESV SYLFSSHVPL
Specificity	A synthetic peptide corresponding to a sequence within amino acids 250-322 of human PRPS1 (NP_002755.1).

ADDITIONAL INFORMATION

Note STRICTLY FOR FURTHER SCIENTIFIC RESEARCH USE ONLY (RUO). MUST NOT TO BE USED IN DIAGNOSTIC OR THERAPEUTIC APPLICATIONS.



Western blot analysis of various lysates using PRPS1 Rabbit pAb (STJ11106806) at 1:1000 dilution.

Secondary antibody: HRP Goat Anti-Rabbit IgG (H+L) (STJS000856) at 1:10000 dilution.

Lysates/ proteins: 25 µg per lane.

Blocking buffer: 3 % nonfat dry milk in TBST.

Detection: ECL Enhanced Kit

Exposure time: 40s.