

Anti-ATG4A antibody (289-398 aa) (STJ11106792)

GENERAL INFORMATION

Product Type	Primary antibodies
Applications	WB/ELISA
Host / Source	Rabbit
Reactivity	Human

PRODUCT PROPERTIES

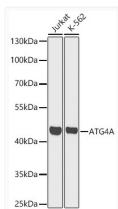
Clonality	Polyclonal
Concentration	Lot specific
Conjugation	Unconjugated
Purification	Affinity purification
Dilution Range	WB:1:500-1:2000 ELISA:Recommended starting concentration is 1 Mu g/mL. Please optimize the concentration based on your specific assay requirements.
Formulation	PBS with 0.02% Sodium Azide, 50% Glycerol, pH 7.3.
Isotype	IgG
Molecular Weight	Protein Mw: 45kDa Observed Mw: 45kDa/50kDa
Storage Instruction	Store at -20°C for up to 1 year from the date of receipt, and avoid repeat freeze-thaw cycles.

TARGET INFORMATION

Gene ID	115201
Gene Symbol	ATG4A
UniProt ID	ATG4A_HUMAN
Immunogen Region	289-398 aa
Immunogen Sequence	TEENGTVNDQTFHCLQSPQR MNILNLDPSVALGFFCKEEK DFDNWCSLVQKEILKENLRM FELVQKHPSHWPPFVPPAKP EVTTTGAEFIDSTEQLLEFD LEEDFEILSV
Specificity	Recombinant fusion protein containing a sequence corresponding to amino acids 289-398 of human ATG4A (NP_443168.2).

ADDITIONAL INFORMATION

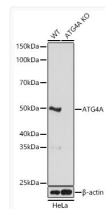
Note **STRICTLY FOR FURTHER SCIENTIFIC RESEARCH USE ONLY (RUO). MUST NOT TO BE USED IN DIAGNOSTIC OR THERAPEUTIC APPLICATIONS.**



Western blot analysis of various lysates using [KO Validated] ATG4A Rabbit pAb (STJ11106792) at 1:1000 dilution.

Secondary antibody: HRP-conjugated Goat anti-Rabbit IgG (H+L) (STJS000856) at 1:10000 dilution.

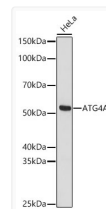
Lysates/ proteins: 25 Mu g per lane.
 Blocking buffer: 3 % nonfat dry milk in TBST.
 Detection: ECL Basic Kit
 Exposure time: 30s.



Western blot analysis of lysates from wild type (WT) and ATG4A knockout (KO) HeLa cells using [KO Validated] ATG4A Rabbit pAb (STJ11106792) at 1:1000 dilution.

Secondary antibody: HRP-conjugated Goat anti-Rabbit IgG (H+L) (STJS000856) at 1:10000 dilution. Lysates/proteins: 25 Mu g per lane.

Blocking buffer: 3% nonfat dry milk in TBST.
 Detection: ECL Basic Kit
 Exposure time: 5s.



Western blot analysis of lysates from HeLa cells using [KO Validated] ATG4A Rabbit pAb (STJ11106792) at 1:1000 dilution.

Secondary antibody: HRP-conjugated Goat anti-Rabbit IgG (H+L) (STJS000856) at 1:10000 dilution.

Lysates/ proteins: 25 Mu g per lane.
 Blocking buffer: 3 % nonfat dry milk in TBST.
 Detection: ECL Basic Kit
 Exposure time: 30s.