

## Anti-Caspase-1 antibody (206-220aa aa) [SRM5055] (STJ11106770)

### GENERAL INFORMATION

Product Type	Primary antibodies
Applications	WB/ELISA
Host / Source	Rat
Reactivity	Mouse/Rat

### PRODUCT PROPERTIES

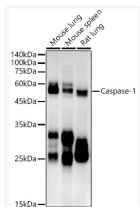
Clonality	Monoclonal
Concentration	Lot specific
Conjugation	Unconjugated
Purification	Affinity purification
Dilution Range	WB:1:1000-1:2000 ELISA:Recommended starting concentration is 1 Mu g/mL. Please optimize the concentration based on your specific assay requirements.
Formulation	PBS with 0.05% Proclin300, 50% Glycerol, pH 7.3.
Isotype	IgG
Molecular Weight	Protein Mw: 46kDa Observed Mw: 48kDa/33kDa
Storage Instruction	Store at -20°C for up to 1 year from the date of receipt, and avoid repeat freeze-thaw cycles.

### TARGET INFORMATION

Gene ID	<a href="#">12362</a>
Gene Symbol	<a href="#">Casp1</a>
UniProt ID	<a href="#">CASP1_MOUSE</a>
Immunogen Region	206-220aa aa
Immunogen Sequence	TALEMVKEVKEFAAC
Specificity	Recombinant fusion protein containing a sequence corresponding to amino acids 206-220aa of mouse Caspase-1.

### ADDITIONAL INFORMATION

Note STRICTLY FOR FURTHER SCIENTIFIC RESEARCH USE ONLY (RUO). MUST NOT TO BE USED IN DIAGNOSTIC OR THERAPEUTIC APPLICATIONS.



Western blot analysis of various lysates using Caspase-1 Rat mAb (STJ11106770) at 1:1000 dilution.

Secondary antibody: HRP-conjugated Goat anti-Rat IgG (H+L) (STJS000857) at 1:10000 dilution.

Lysates/proteins: 25 Mu g per lane.

Blocking buffer: 3% nonfat dry milk in TBST.

Detection: ECL Basic Kit

Exposure time: 180s.