

Anti-Ki67 antibody (460-680 aa) (STJ11106755)

GENERAL INFORMATION

Product Type	Primary antibodies
Applications	WB/ELISA
Host / Source	Rabbit
Reactivity	Human/Mouse

PRODUCT PROPERTIES

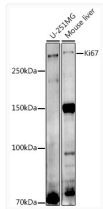
Clonality	Polyclonal
Concentration	Lot specific
Conjugation	Unconjugated
Purification	Affinity purification
Dilution Range	WB:1:500-1:1000 ELISA:Recommended starting concentration is 1 µg/mL. Please optimize the concentration based on your specific assay requirements.
Formulation	PBS with 0.02% Sodium Azide, 50% Glycerol, pH 7.3.
Isotype	IgG
Molecular Weight	Protein Mw: 359kDa Observed Mw: 359kDa
Storage Instruction	Store at -20°C for up to 1 year from the date of receipt, and avoid repeat freeze-thaw cycles.

TARGET INFORMATION

Gene ID	4288
Gene Symbol	MKI67
UniProt ID	KI67_HUMAN
Immunogen Region	460-680 aa
Immunogen Sequence	SLSKPEKLGTTAGQMCSGLP GLSSVDINNFQDSINESEGI PLKRRRVSFQGGHLRPELFDE NLPNTPLKRGEAPTQRKSL VMHTPPVLKKIIEQPPSG KQESGSEIHVEVKAQSLVIS PPAPSPRKTTPVASDQRRRSC KTAPASSKSKQTEVPKRGGK KSGNLPKSRVSRSQHDIL QMICKRRRSGASEANLIVAK SWADVVKLGAKQTQTKVIKH G
Specificity	Recombinant fusion protein containing a sequence corresponding to amino acids 460-680 of human Ki67 (NP_002408.3).

ADDITIONAL INFORMATION

Note STRICTLY FOR FURTHER SCIENTIFIC RESEARCH USE ONLY (RUO). MUST NOT TO BE USED IN DIAGNOSTIC OR THERAPEUTIC APPLICATIONS.



Western blot analysis of various lysates using Ki67 Rabbit pAb (STJ11106755) at 1:1000 dilution.
Secondary antibody: HRP-conjugated Goat anti-Rabbit IgG (H+L) (STJS000856) at 1:10000 dilution.
Lysates/proteins: 25 µg per lane.
Blocking buffer: 3% nonfat dry milk in TBST.
Detection: ECL Basic Kit
Exposure time: 180s.