

Anti-EPHA3/EPHA4/EPHA5 antibody (700-800 aa) (STJ11106609)

GENERAL INFORMATION

Product Type	Primary antibodies
Applications	IHC-P/IF/ICC/ELISA
Host / Source	Rabbit
Reactivity	Human/Mouse/Rat

PRODUCT PROPERTIES

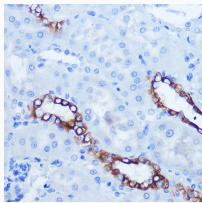
Clonality	Polyclonal
Concentration	Lot specific
Conjugation	Unconjugated
Purification	Affinity purification
Dilution Range	IHC-P:1:50-1:200 IF/CC:1:50-1:200 ELISA:Recommended starting concentration is 1 µg/mL. Please optimize the concentration based on your specific assay requirements.
Formulation	PBS with 0.01% Thimerosal, 50% Glycerol, pH 7.3.
Isotype	IgG
Molecular Weight	Refer to figures
Storage Instruction	Store at -20°C for up to 1 year from the date of receipt, and avoid repeat freeze-thaw cycles.

TARGET INFORMATION

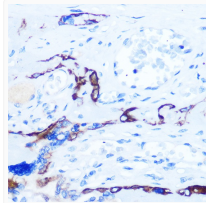
Gene ID	2043 2044 2042 EPHA4 EPHA5 EPHA4_HUMAN EPHA5_HUMAN EPHA3_HUMAN
Immunogen Region	700-800 aa
Immunogen Sequence	EYMENGLSDSFLRKHDAQFT VIQLVGMLRGIASGMKYLSD MGYVHRDLAARNILINSNLV CKVSDFGLSRVLEDDPEAAAY TTRGGKIPRWTSPEAIAYR K
Specificity	A synthetic peptide corresponding to a sequence within amino acids 700-800 of human EPHA3/EPHA4/EPHA5 (NP_005224.2).

ADDITIONAL INFORMATION

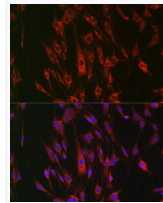
Note **STRICTLY FOR FURTHER SCIENTIFIC RESEARCH USE ONLY (RUO). MUST NOT TO BE USED IN DIAGNOSTIC OR THERAPEUTIC APPLICATIONS.**



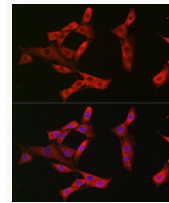
Immunohistochemistry analysis of paraffin-embedded Rat kidney using EPHA3/EPHA4/EPHA5 pAb (STJ11106609) at dilution of 1:100 (40x lens). Microwave antigen retrieval performed with 0.01M Tris/EDTA Buffer (pH 9.0) prior to immunohistochemistry staining.



Immunohistochemistry analysis of paraffin-embedded Human placenta using EPHA3/EPHA4/EPHA5 pAb (STJ11106609) at dilution of 1:100 (40x lens). Microwave antigen retrieval performed with 0.01M Tris/EDTA Buffer (pH 9.0) prior to immunohistochemistry staining.



Immunofluorescence analysis of C6 cells using EPHA3/EPHA4/EPHA5 pAb (STJ11106609) at dilution of 1:100 (40x lens). Blue: DAPI for nuclear staining.



Immunofluorescence analysis of NIH/3T3 cells using EPHA3/EPHA4/EPHA5 pAb (STJ11106609) at dilution of 1:100 (40x lens). Blue: DAPI for nuclear staining.