

Anti-TET2 antibody [SMM5040] (STJ11106588)

GENERAL INFORMATION

Product Type	Primary antibodies
Applications	WB/ELISA
Host / Source	Mouse
Reactivity	Human/Mouse

PRODUCT PROPERTIES

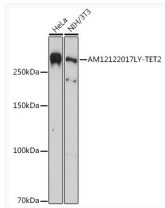
Clonality	Monoclonal
Concentration	Lot specific
Conjugation	Unconjugated
Purification	Affinity purification
Dilution Range	WB:1:500-1:2000 ELISA:Recommended starting concentration is 1 μ g/mL. Please optimize the concentration based on your specific assay requirements.
Formulation	PBS with 0.05% Proclin300, 50% Glycerol, pH 7.3.
Isotype	IgG1k
Molecular Weight	Protein Mw: 224kDa Observed Mw: 260kDa

TARGET INFORMATION

Gene ID	54790
Gene Symbol	TET2
UniProt ID	TET2_HUMAN
Specificity	Recombinant protein of human TET2.

ADDITIONAL INFORMATION

Note STRICTLY FOR FURTHER SCIENTIFIC RESEARCH USE ONLY (RUO). MUST NOT TO BE USED IN DIAGNOSTIC OR THERAPEUTIC APPLICATIONS.



Western blot analysis of various lysates using TET2 Mouse mAb (STJ11106588) at 1:1000 dilution.

Secondary antibody: HRP-conjugated Goat anti-Mouse IgG (H+L) (STJS000854) at 1:10000 dilution.

Lysates/proteins: 25 μ g per lane.

Blocking buffer: 3% nonfat dry milk in TBST.

Detection: ECL Basic Kit

Exposure time: 180s.