

Anti-NXPH4 antibody (24-224 aa) (STJ11106448)

GENERAL INFORMATION

Product Type	Primary antibodies
Applications	WB/IHC-P/ELISA
Host / Source	Rabbit
Reactivity	Human/Mouse

PRODUCT PROPERTIES

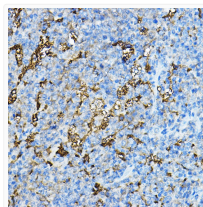
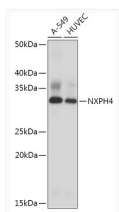
Clonality	Polyclonal
Concentration	Lot specific
Conjugation	Unconjugated
Purification	Affinity purification
Dilution Range	WB:1:500-1:2000 IHC-P:1:50-1:200 ELISA:Recommended starting concentration is 1 Mu g/mL. Please optimize the concentration based on your specific assay requirements.
Formulation	PBS with 0.01% Thimerosal, 50% Glycerol, pH 7.3.
Isotype	IgG
Molecular Weight	Protein Mw: 33kDa Observed Mw: 33kDa
Storage Instruction	Store at -20°C for up to 1 year from the date of receipt, and avoid repeat freeze-thaw cycles.

TARGET INFORMATION

Gene ID	11247
Gene Symbol	NXPH4
UniProt ID	NXPH4_HUMAN
Immunogen Region	24-224 aa
Immunogen Sequence	QIPESGRPQYLGLRPAAAGA GAPGQQLPEPRSSDGLGVGR AWSWAWPTNHTGALARAGAA GALPAQRTRKPKSIKAARAK KIFGWGDFYFRVHTLKFSLV VTGKIVDHSVNGTFSVYFRHN SSSLGNLSVSIVPPSKRVEF GGVWLPGPVPHPLQSTLALV GVLPLGLPPLGMAAAAAGPG LGGSLGGALAGPLGGALGVP G
Specificity	Recombinant fusion protein containing a sequence corresponding to amino acids 24-224 of human NXPH4 (NP_009155.1).

ADDITIONAL INFORMATION

Note STRICTLY FOR FURTHER SCIENTIFIC RESEARCH USE ONLY (RUO). MUST NOT TO BE USED IN DIAGNOSTIC OR THERAPEUTIC APPLICATIONS.



Western blot analysis of various lysates using NXPH4 Rabbit pAb (STJ11106448) at 1:1000 dilution.

Secondary antibody: HRP-conjugated Goat anti-Rabbit IgG (H+L) (STJS000856) at 1:10000 dilution.

Lysates/proteins: 25 Mu g per lane.
Blocking buffer: 3% nonfat dry milk in TBST.
Detection: ECL Basic Kit
Exposure time: 10s.

Immunohistochemistry analysis of paraffin-embedded Mouse spleen using NXPH4 Rabbit pAb (STJ11106448) at dilution of 1:100 (40x lens). Microwave antigen retrieval performed with 0.01M PBS Buffer (pH 7.2) prior to immunohistochemistry staining.