

Anti-C10orf67 antibody (68-243 aa) (STJ11106434)

GENERAL INFORMATION

Product Type	Primary antibodies
Applications	WB/ELISA
Host / Source	Rabbit
Reactivity	Human/Mouse/Rat

PRODUCT PROPERTIES

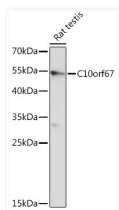
Clonality	Polyclonal
Concentration	Lot specific
Conjugation	Unconjugated
Purification	Affinity purification
Dilution Range	WB:1:500-1:2000 ELISA:Recommended starting concentration is 1 Mu g/mL. Please optimize the concentration based on your specific assay requirements.
Formulation	PBS with 0.01% Thimerosal, 50% Glycerol, pH 7.3.
Isotype	IgG
Molecular Weight	Protein Mw: 64kDa Observed Mw: 64kDa
Storage Instruction	Store at -20°C for up to 1 year from the date of receipt, and avoid repeat freeze-thaw cycles.

TARGET INFORMATION

Gene ID	256815
Gene Symbol	C10orf67
UniProt ID	CJ067_HUMAN
Immunogen Region	68-243 aa
Immunogen Sequence	STRLNISDDLKIGFFSTDHA TQTDSSSEILSVKELSSSTQK LAQMMKSLQVDFGFLKQLLQ LKFEDRLKEESLSLFTILHD RILEIEKHYQQNEDKMRKSF NQQLADAIIVIKGMYQQFFE VEEENVSLQDASTVKTNILL RKLKEKEEVIKELKEELDQY KDFGFHKMSK
Specificity	Recombinant fusion protein containing a sequence corresponding to amino acids 68-243 of C10orf67 (NP_001338235.1).

ADDITIONAL INFORMATION

Note STRICTLY FOR FURTHER SCIENTIFIC RESEARCH USE ONLY (RUO). MUST NOT TO BE USED IN DIAGNOSTIC OR THERAPEUTIC APPLICATIONS.



Western blot analysis of lysates from Rat testis, using C10orf67 Rabbit pAb (STJ11106434) at 1:1000 dilution.

Secondary antibody: HRP-conjugated Goat anti-Rabbit IgG (H+L) (STJS000856) at 1:10000 dilution.

Lysates/proteins: 25 Mu g per lane.

Blocking buffer: 3% nonfat dry milk in TBST.

Detection: ECL Basic Kit

Exposure time: 180s.