

Anti-CREB1 antibody (1-120 aa) (STJ11106047)

GENERAL INFORMATION

Product Type	Primary antibodies
Applications	WB/IP/ELISA
Host / Source	Rabbit
Reactivity	Human/Mouse/Rat

PRODUCT PROPERTIES

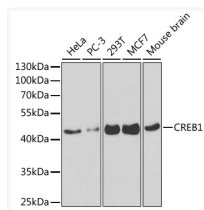
Clonality	Polyclonal
Concentration	Lot specific
Conjugation	Unconjugated
Purification	Affinity purification
Dilution Range	WB:1:500-1:2000 IP:0.5 Mu g-4 Mu g antibody for 200 Mu g-400 Mu g extracts of whole cells ELISA:Recommended starting concentration is 1 Mu g/mL. Please optimize the concentration based on your specific assay requirements.
Formulation	PBS with 0.02% Sodium Azide, 50% Glycerol, pH 7.3.
Isotype	IgG
Molecular Weight	Protein Mw: 35kDa Observed Mw: 45kDa
Storage Instruction	Store at -20°C for up to 1 year from the date of receipt, and avoid repeat freeze-thaw cycles.

TARGET INFORMATION

Gene ID	1385
Gene Symbol	CREB1
UniProt ID	CREB1_HUMAN
Immunogen Region	1-120 aa
Immunogen Sequence	MTMESGAENQQSGDAAVTEA ENQQMTVQAQPQIATLAQVS MPAAHATSSAPTIVTLVQLPN GQTVQVHGVIAQAQPSVIQS PQVQTVQSSCKDLKRLFSGT QISTIAESEDSSQESVDSVTD
Specificity	Recombinant fusion protein containing a sequence corresponding to amino acids 1-120 of human CREB1 (NP_604391.1).

ADDITIONAL INFORMATION

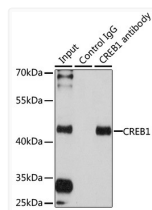
Note **STRICTLY FOR FURTHER SCIENTIFIC RESEARCH USE ONLY (RUO). MUST NOT TO BE USED IN DIAGNOSTIC OR THERAPEUTIC APPLICATIONS.**



Western blot analysis of various lysates using CREB1 Rabbit pAb (STJ11106047) at 1:1000 dilution.

Secondary antibody: HRP-conjugated Goat anti-Rabbit IgG (H+L) (STJS000856) at 1:10000 dilution.

Lysates/proteins: 25 Mu g per lane.
Blocking buffer: 3% nonfat dry milk in TBST.



Immunoprecipitation analysis of 200 Mu g extracts of 293T cells using 1 Mu g CREB1 antibody (STJ11106047). Western blot was performed from the immunoprecipitate using CREB1 antibody (STJ11106047) at a dilution of 1:1000.