

## Anti-PCBP1 antibody (100-200) (STJ111059)

### GENERAL INFORMATION

Product Type	Primary antibodies
Applications	WB/IHC-P/IF/ICC/ELISA
Host / Source	Rabbit
Reactivity	Human/Mouse/Rat

### PRODUCT PROPERTIES

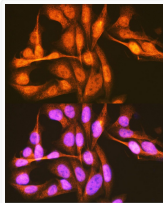
Clonality	Polyclonal
Concentration	Lot specific
Conjugation	Unconjugated
Purification	Affinity purification
Dilution Range	WB:1:500-1:1000 IHC-P:1:50-1:200 IF/ICC:1:50-1:200 ELISA:Recommended starting concentration is 1 Mu g/mL. Please optimize the concentration based on your specific assay requirements.
Formulation	PBS with 0.02% Sodium Azide, 50% Glycerol, pH 7.3.
Isotype	IgG
Molecular Weight	Protein Mw: 37kDa Observed Mw: 40kDa
Storage Instruction	Store at -20°C for up to 1 year from the date of receipt, and avoid repeat freeze-thaw cycles.

### TARGET INFORMATION

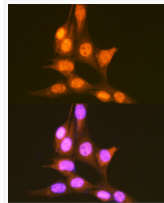
Gene ID	<a href="#">5093</a>
Gene Symbol	<a href="#">PCBP1</a>
UniProt ID	<a href="#">PCBP1_HUMAN</a>
Immunogen Region	100-200
Immunogen Sequence	LRLVVPATQCGSLIGKGGCK IKEIRESTGAQVQVAGDMLP NSTERAITIAGVPQSVTECV KQICLVMLETLSQSPQGRVM TIPYQMPASSPVICAGGQD R
Specificity	A synthetic peptide corresponding to a sequence within amino acids 100-200 of human hnRNP E1/hnRNP E1/PCBP1 (NP_006187.2).

### ADDITIONAL INFORMATION

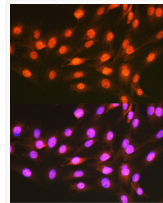
Note **STRICTLY FOR FURTHER SCIENTIFIC RESEARCH USE ONLY (RUO). MUST NOT TO BE USED IN DIAGNOSTIC OR THERAPEUTIC APPLICATIONS.**



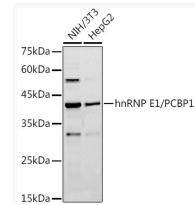
Immunofluorescence analysis of U-2 OS cells using hnRNP E1/hnRNP E1/PCBP1 Rabbit polyclonal antibody (STJ111059) at dilution of 1:100 (40x lens). Blue: DAPI for nuclear staining.



Immunofluorescence analysis of NIH-3T3 cells using hnRNP E1/hnRNP E1/PCBP1 Rabbit polyclonal antibody (STJ111059) at dilution of 1:100 (40x lens). Blue: DAPI for nuclear staining.



Immunofluorescence analysis of C6 cells using hnRNP E1/hnRNP E1/PCBP1 Rabbit polyclonal antibody (STJ111059) at dilution of 1:100 (40x lens). Blue: DAPI for nuclear staining.



Western blot analysis of extracts of various cell lines, using hnRNP E1/PCBP1 antibody (STJ111059) at 1:1000 dilution. Secondary antibody: HRP Goat Anti-Rabbit IgG (H+L) (STJS000856) at 1:10000 dilution. Lysates/proteins: 25 Mu g per lane. Blocking buffer: 3% nonfat dry milk in TBST. Detection: ECL Basic Kit. Exposure time: 30s.