

Anti-Phospho-PKC alpha+PKC delta-T410-T410 antibody [S5905RM] (STJ11105905)

GENERAL INFORMATION

Product Type	Primary antibodies
Applications	WB/ELISA
Host / Source	Rabbit
Reactivity	Human

PRODUCT PROPERTIES

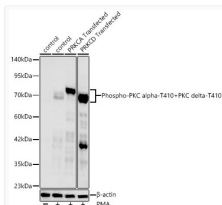
Clonality	Monoclonal
Concentration	Lot specific
Conjugation	Unconjugated
Purification	Affinity purification
Dilution Range	WB:1:1000-1:3000 ELISA:Recommended starting concentration is 1 Mu g/mL. Please optimize the concentration based on your specific assay requirements.
Formulation	PBS with 0.05% Proclin300, 0.05% BSA, 50% Glycerol, pH 7.3.
Isotype	IgG
Molecular Weight	Protein Mw: 76kDa/77kDa Observed Mw: 76-80kDa
Storage Instruction	Store at-20°C for up to 1 year from the date of receipt, and avoid repeat freeze-thaw cycles.

TARGET INFORMATION

Gene ID	5580 5578
Gene Symbol	PRKCD PRKCA
UniProt ID	KPCD_HUMAN KPCA_HUMAN
Immunogen Sequence	TTSTFC
Specificity	A synthetic phosphorylated peptide around T410 of human PRKCZ (NP_002735.3).

ADDITIONAL INFORMATION

Note STRICTLY FOR FURTHER SCIENTIFIC RESEARCH USE ONLY (RUO). MUST NOT TO BE USED IN DIAGNOSTIC OR THERAPEUTIC APPLICATIONS.



Western blot analysis of lysates from wild type (WT) , 293F cells treated by PMA, 293F cells treated by PMA after transfected with PRKCA and 293F cells treated by PMA after transfected with PRKCD using Phospho-PKC alpha-T410+PKC delta-T410 Rabbit monoclonal antibody (STJ11105905) at 1:2000 dilution, 293F-, 293F-PRKCA-Transfected and 293F-PRKCD-Transfected cells were treated by PMA (200 nM) at 37 °C for 30 minutes. Secondary antibody: HRP Goat Anti-Rabbit IgG (H+L) (STJS000856) at 1:10000 dilution. Lysates/proteins: 25 Mu g per lane. Blocking buffer: 3% nonfat dry milk in TBST. Detection: ECL Basic Kit. Exposure time: 90s.