

Anti-Phospho-LIPE-S660 antibody (STJ11105803)

GENERAL INFORMATION

Product Type	Primary antibodies
Applications	WB
Host / Source	Rabbit
Reactivity	Human/Mouse/Rat

PRODUCT PROPERTIES

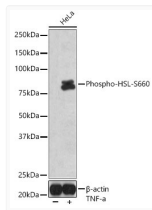
Clonality	Polyclonal
Concentration	Lot specific
Conjugation	Unconjugated
Purification	Affinity purification
Dilution Range	WB:1:500-1:2000
Formulation	PBS with 0.02% Sodium Azide, 50% Glycerol, pH 7.4.
Isotype	IgG
Molecular Weight	Protein Mw: 117kDa Observed Mw: 81kDa, 83kDa
Storage Instruction	Store at -20°C for up to 1 year from the date of receipt, and avoid repeat freeze-thaw cycles.

TARGET INFORMATION

Gene ID	3991
Gene Symbol	LIPE
UniProt ID	LIPS_HUMAN
Specificity	A synthesized peptide derived from human HSL (Phospho-Ser660)

ADDITIONAL INFORMATION

Note	STRICTLY FOR FURTHER SCIENTIFIC RESEARCH USE ONLY (RUO). MUST NOT TO BE USED IN DIAGNOSTIC OR THERAPEUTIC APPLICATIONS.
------	---



Western blot analysis of lysates from HeLa cells, using Phospho-HSL-S660 Rabbit pAb (STJ11105803) at 1:1000 dilution. HeLa cells were treated by TNF-Alpha (20 ng/ml) at 37 °C for 30 minutes.

Secondary antibody: HRP-conjugated Goat anti-Rabbit IgG (H+L) (STJS000856) at 1:10000 dilution.

Lysates/proteins: 25 µg per lane.

Blocking buffer: 3% nonfat dry milk in TBST.