

Anti-Phospho-alt-RPL36-S22 antibody (STJ11105798)

GENERAL INFORMATION

Product Type	Primary antibodies
Applications	WB/DB/ELISA
Host / Source	Rabbit
Reactivity	Human

PRODUCT PROPERTIES

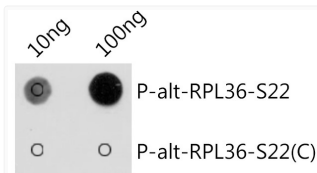
Clonality	Polyclonal
Concentration	Lot specific
Conjugation	Unconjugated
Purification	Affinity purification
Dilution Range	WB:1:500-1:2000 DB:1:500-1:1000 ELISA:Recommended starting concentration is 1 μ g/mL. Please optimize the concentration based on your specific assay requirements.
Formulation	PBS with 0.01% Thimerosal, 50% Glycerol, pH 7.3.
Isotype	IgG
Molecular Weight	Refer to figures
Storage Instruction	Store at -20°C for up to 1 year from the date of receipt, and avoid repeat freeze-thaw cycles.

TARGET INFORMATION

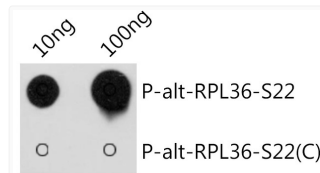
Immunogen Sequence	RYSPP
Specificity	A synthetic phosphorylated peptide around S22 of alt-RPL36.

ADDITIONAL INFORMATION

Note **STRICTLY FOR FURTHER SCIENTIFIC RESEARCH USE ONLY (RUO). MUST NOT TO BE USED IN DIAGNOSTIC OR THERAPEUTIC APPLICATIONS.**



Dot-blot analysis of all sorts of peptides using Phospho-alt-RPL36-S22 antibody (STJ11105798) at 1:1000 dilution. Exposure time: 1s.



Dot-blot analysis of all sorts of peptides using Phospho-alt-RPL36-S22 antibody (STJ11105798) at 1:1000 dilution. Exposure time: 30s.