

## Anti-Phospho-alt-RPL36-S19 antibody (STJ11105797)

### GENERAL INFORMATION

Product Type	Primary antibodies
Applications	WB/DB/ELISA
Host / Source	Rabbit
Reactivity	Human

### PRODUCT PROPERTIES

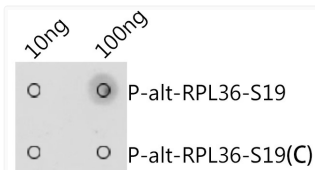
Clonality	Polyclonal
Concentration	Lot specific
Conjugation	Unconjugated
Purification	Affinity purification
Dilution Range	WB:1:500-1:2000 DB:1:500-1:1000 ELISA:Recommended starting concentration is 1 $\mu$ g/mL. Please optimize the concentration based on your specific assay requirements.
Formulation	PBS with 0.01% Thimerosal, 50% Glycerol, pH 7.3.
Isotype	IgG
Molecular Weight	Refer to figures
Storage Instruction	Store at -20°C for up to 1 year from the date of receipt, and avoid repeat freeze-thaw cycles.

### TARGET INFORMATION

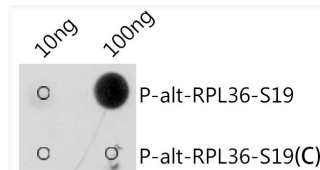
Immunogen Sequence	ELSRVY
Specificity	A synthetic phosphorylated peptide around S19 of alt-RPL36.

### ADDITIONAL INFORMATION

Note STRICTLY FOR FURTHER SCIENTIFIC RESEARCH USE ONLY (RUO). MUST NOT TO BE USED IN DIAGNOSTIC OR THERAPEUTIC APPLICATIONS.



Dot-blot analysis of all sorts of peptides using Phospho-alt-RPL36-S19 antibody (STJ11105797) at 1:1000 dilution.  
Exposure time: 1s.



Dot-blot analysis of all sorts of peptides using Phospho-alt-RPL36-S19 antibody (STJ11105797) at 1:1000 dilution.  
Exposure time: 30s.