

Anti-Phospho-RPS6-S235 antibody (STJ11105772)

GENERAL INFORMATION

Product Type	Primary antibodies
Applications	WB/ELISA
Host / Source	Rabbit
Reactivity	Human/Mouse/Rat

PRODUCT PROPERTIES

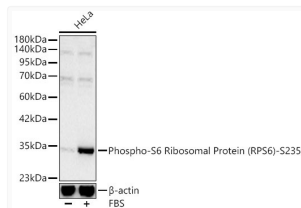
Clonality	Polyclonal
Concentration	Lot specific
Conjugation	Unconjugated
Purification	Affinity purification
Dilution Range	WB:1:500-1:2000 ELISA:Recommended starting concentration is 1 µg/mL. Please optimize the concentration based on your specific assay requirements.
Formulation	PBS with 0.02% Sodium Azide, 50% Glycerol, pH 7.3.
Isotype	IgG
Molecular Weight	Protein Mw: 29kDa Observed Mw: 29kDa
Storage Instruction	Store at -20°C for up to 1 year from the date of receipt, and avoid repeat freeze-thaw cycles.

TARGET INFORMATION

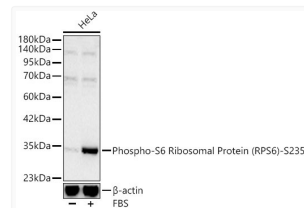
Gene ID	6194
Gene Symbol	RPS6
UniProt ID	RS6_HUMAN
Specificity	A phospho specific peptide corresponding to residues surrounding S235 of human RPS6

ADDITIONAL INFORMATION

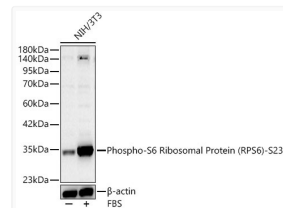
Note **STRICTLY FOR FURTHER SCIENTIFIC RESEARCH USE ONLY (RUO). MUST NOT TO BE USED IN DIAGNOSTIC OR THERAPEUTIC APPLICATIONS.**



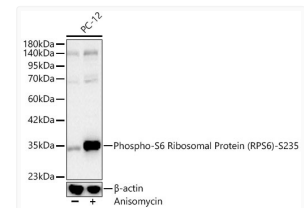
Western blot analysis of lysates from HeLa cells using Phospho-S6 Ribosomal Protein (RPS6) - S235 Rabbit pAb (STJ11105772) at 1:800 dilution. HeLa cells were treated by 20% FBS at 37 °C for 90 minutes after serum starvation overnight. Secondary antibody: HRP-conjugated Goat anti-Rabbit IgG (H+L) (STJS000856) at 1:10000 dilution. Lysates/proteins: 25 µg per lane. Blocking buffer: 3% nonfat dry milk in TBST. Detection: ECL Basic Kit Exposure time: 30s.



Western blot analysis of lysates from HeLa cells using Phospho-S6 Ribosomal Protein (RPS6) - S235 Rabbit pAb (STJ11105772) at 1:800 dilution. HeLa cells were treated by 20% FBS at 37C for 90 minutes after serum starvation overnight. Secondary antibody: HRP-conjugated Goat anti-Rabbit IgG (H+L) (STJS000856) at 1:10000 dilution. Lysates/proteins: 25 µg per lane. Blocking buffer: 3% nonfat dry milk in TBST. Detection: ECL Basic Kit Exposure time: 30s.



Western blot analysis of lysates from NIH/3T3 cells using Phospho-S6 Ribosomal Protein (RPS6) -S235 Rabbit pAb (STJ11105772) at 1:800 dilution. NIH/3T3 cells were treated by 20% FBS at 37C for 90 minutes after serum starvation overnight. Secondary antibody: HRP-conjugated Goat anti-Rabbit IgG (H+L) (STJS000856) at 1:10000 dilution. Lysates/proteins: 25 µg per lane. Blocking buffer: 3% nonfat dry milk in TBST. Detection: ECL Basic Kit Exposure time: 30s.



Western blot analysis of lysates from PC-12 cells using Phospho-S6 Ribosomal Protein (RPS6) - S235 Rabbit pAb (STJ11105772) at 1:800 dilution. PC-12 cells were treated by Anisomycin (25 µg/ml) at 37C for 30 minutes. Secondary antibody: HRP-conjugated Goat anti-Rabbit IgG (H+L) (STJS000856) at 1:10000 dilution. Lysates/proteins: 25 µg per lane. Blocking buffer: 3% nonfat dry milk in TBST. Detection: ECL Basic Kit Exposure time: 30s.