

Anti-Rabbit IgG isotype control antibody [S5763RM] (STJ11105763)

GENERAL INFORMATION

Product Type	Primary antibodies
Applications	IHC-P/IF/ICC/IP/FC/ChIP
Host / Source	Rabbit
Reactivity	Rabbit

PRODUCT PROPERTIES

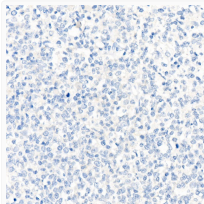
Clonality	Monoclonal
Concentration	Lot specific
Conjugation	Unconjugated
Purification	Protein A/G purification
Dilution Range	IHC-P:1:50-1:200 IF/CC:1:50-1:200 IP:0.5 Mu g-4 Mu g antibody for 200 Mu g-400 Mu g extracts of whole cells FC:1:50-1:200 ChIP:3 Mu g antibody for 10 Mu g-15 Mu g of Chromatin
Formulation	PBS with 0.05% Proclin300, 0.05% BSA, 50% Glycerol, pH 7.3.
Isotype	IgG
Storage Instruction	Store at -20°C for up to 1 year from the date of receipt, and avoid repeat freeze-thaw cycles.

TARGET INFORMATION

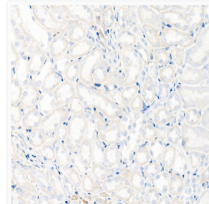
Specificity	None
-------------	------

ADDITIONAL INFORMATION

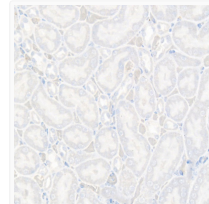
Note **STRICTLY FOR FURTHER SCIENTIFIC RESEARCH USE ONLY (RUO). MUST NOT TO BE USED IN DIAGNOSTIC OR THERAPEUTIC APPLICATIONS.**



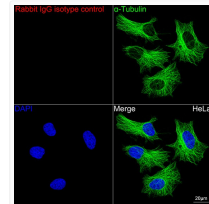
Immunohistochemistry analysis of paraffin-embedded Human tonsil using Rabbit IgG isotype control (STJ11105763) at dilution of 1:100 (40x lens). High pressure antigen retrieval performed with 0.01M Citrate Bufferr (pH 6.0) prior to immunohistochemistry staining.



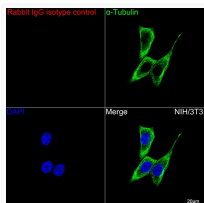
Immunohistochemistry analysis of paraffin-embedded Mouse kidney using Rabbit IgG isotype control (STJ11105763) at dilution of 1:100 (40x lens). High pressure antigen retrieval performed with 0.01M Citrate Bufferr (pH 6.0) prior to immunohistochemistry staining.



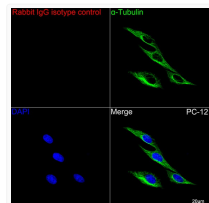
Immunohistochemistry analysis of paraffin-embedded Rat kidney using Rabbit IgG isotype control (STJ11105763) at dilution of 1:100 (40x lens). High pressure antigen retrieval performed with 0.01M Citrate Bufferr (pH 6.0) prior to immunohistochemistry staining.



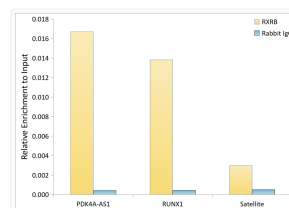
Confocal imaging of HeLa cells using Rabbit IgG isotype control (STJ11105763, dilution 1:200) followed by a further incubation with Cy3 Goat Anti-Rabbit IgG (H+L) (STJS001166, dilution 1:500) (Red). The cells were counterstained with Alpha-Tubulin Mouse mAb (STJ11107556, dilution 1:400) followed by incubation with ABflo® 488-conjugated Goat Anti-Mouse IgG (H+L) antibody (STJS001209, dilution 1:500) (Green). DAPI was used for nuclear staining (Blue). Objective: 100x.



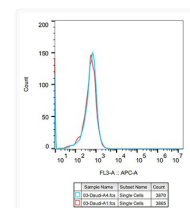
Confocal imaging of NIH/3T3 cells using Rabbit IgG isotype control (STJ11105763, dilution 1:200) followed by a further incubation with Cy3 Goat Anti-Rabbit IgG (H+L) (STJS001166, dilution 1:500) (Red). The cells were counterstained with Alpha-Tubulin Mouse mAb (STJ11107556, dilution 1:400) followed by incubation with ABflo® 488-conjugated Goat Anti-Mouse IgG (H+L) antibody (STJS001209, dilution 1:500) (Green). DAPI was used for nuclear staining (Blue). Objective: 100x.



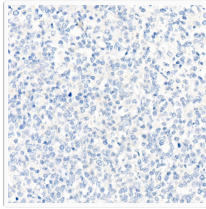
Confocal imaging of PC-12 cells using Rabbit IgG isotype control (STJ11105763, dilution 1:200) followed by a further incubation with Cy3 Goat Anti-Rabbit IgG (H+L) (STJS001166, dilution 1:500) (Red). The cells were counterstained with Alpha-Tubulin Mouse mAb (STJ11107556, dilution 1:400) followed by incubation with ABflo® 488-conjugated Goat Anti-Mouse IgG (H+L) antibody (STJS001209, dilution 1:500) (Green). DAPI was used for nuclear staining (Blue). Objective: 100x.



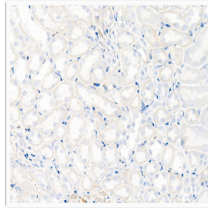
Chromatin immunoprecipitation was performed with 15 Mu g of cross-linked chromatin from HeLa cells transfected with a RXRB expression vector containing a single C-terminal flag-Tag, using 3 Mu g of Rabbit IgG isotype control (STJ11105763) and RXRB Rabbit mAb (STJ233808). The enrichment of immunoprecipitated DNA at different genomic loci was examined by quantitative PCR. The histogram compares the ratio of the immunoprecipitated DNA to the input at given loci.



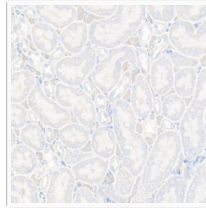
Flow cytometry: Daudi cells were stained with Rabbit IgG isotype control (STJ11105763, 10 Mu g/mL, blue line) followed by goat anti-Rabbit pAb APC (1:600 dilution) staining. Non-fluorescently stained Daudi cells was used as blank control (red line).



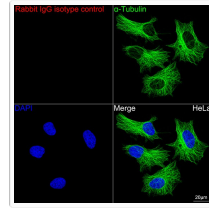
Immunohistochemistry analysis of paraffin-embedded Human tonsil using Rabbit IgG isotype control (STJ11105763) at dilution of 1:100 (40x lens). High pressure antigen retrieval performed with 0.01M Citrate Bufferr (pH 6.0) prior to immunohistochemistry staining.



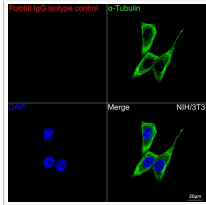
Immunohistochemistry analysis of paraffin-embedded Mouse kidney using Rabbit IgG isotype control (STJ11105763) at dilution of 1:100 (40x lens). High pressure antigen retrieval performed with 0.01M Citrate Bufferr (pH 6.0) prior to immunohistochemistry staining.



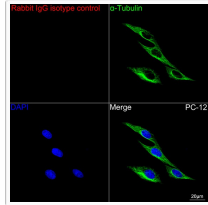
Immunohistochemistry analysis of paraffin-embedded Rat kidney using Rabbit IgG isotype control (STJ11105763) at dilution of 1:100 (40x lens). High pressure antigen retrieval performed with 0.01M Citrate Bufferr (pH 6.0) prior to immunohistochemistry staining.



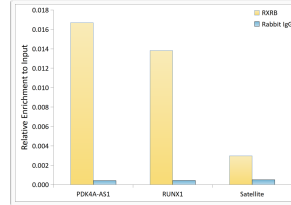
Confocal imaging of HeLa cells using Rabbit IgG isotype control (STJ11105763, dilution 1:200) followed by a further incubation with Cy3 Goat Anti-Rabbit IgG (H+L) (STJS001166, dilution 1:500) (Red). The cells were counterstained with β -Tubulin Mouse mAb (STJ11107556, dilution 1:400) followed by incubation with ABflo® 488-conjugated Goat Anti-Mouse IgG (H+L) antibody (STJS001209, dilution 1:500) (Green). DAPI was used for nuclear staining (Blue). Objective: 100x.



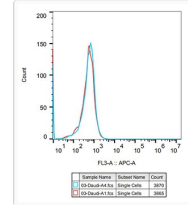
Confocal imaging of NIH/3T3 cells using Rabbit IgG isotype control (STJ11105763, dilution 1:200) followed by a further incubation with Cy3 Goat Anti-Rabbit IgG (H+L) (STJS001166, dilution 1:500) (Red). The cells were counterstained with β -Tubulin Mouse mAb (STJ11107556, dilution 1:400) followed by incubation with ABflo® 488-conjugated Goat Anti-Mouse IgG (H+L) antibody (STJS001209, dilution 1:500) (Green). DAPI was used for nuclear staining (Blue). Objective: 100x.



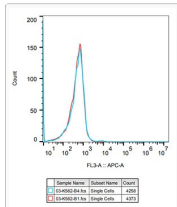
Confocal imaging of PC-12 cells using Rabbit IgG isotype control (STJ11105763, dilution 1:200) followed by a further incubation with Cy3 Goat Anti-Rabbit IgG (H+L) (STJS001166, dilution 1:500) (Red). The cells were counterstained with β -Tubulin Mouse mAb (STJ11107556, dilution 1:400) followed by incubation with ABflo® 488-conjugated Goat Anti-Mouse IgG (H+L) antibody (STJS001209, dilution 1:500) (Green). DAPI was used for nuclear staining (Blue). Objective: 100x.



Chromatin immunoprecipitation was performed with 15 μ g of cross-linked chromatin from HeLa cells transfected with a RXRB expression vector containing a single C-terminal flag-Tag, using 3 μ g of Rabbit IgG isotype control (STJ11105763) and RXRB Rabbit mAb (STJ233808). The enrichment of immunoprecipitated DNA at different genomic loci was examined by quantitative PCR. The histogram compares the ratio of the immunoprecipitated DNA to the input at given loci.



Flow cytometry: Daudi cells were stained with Rabbit IgG isotype control (STJ11105763, 10 μ g/mL, blue line) followed by goat anti-Rabbit pAb APC (1:600 dilution) staining. Non-fluorescently stained Daudi cells was used as blank control (red line).



Flow cytometry: K562 cells were stained with Rabbit IgG isotype control (STJ11105763, 10 μ g/mL, blue line) followed by goat anti-Rabbit pAb APC (1:600 dilution) staining. Non-fluorescently stained K562 cells was used as blank control (red line).