

Anti-IGHA1 antibody (122-353 aa) (STJ11105741)

GENERAL INFORMATION

Product Type	Primary antibodies
Applications	WB/FC/ELISA
Host / Source	Rabbit
Reactivity	Human

PRODUCT PROPERTIES

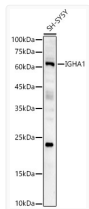
Clonality	Polyclonal
Concentration	Lot specific
Conjugation	Unconjugated
Purification	Affinity purification
Dilution Range	WB:1:500-1:1000 FC:1:20-1:50 ELISA:Recommended starting concentration is 1 Mu g/mL. Please optimize the concentration based on your specific assay requirements.
Formulation	PBS with 0.05% Proclin300, 50% Glycerol, pH 7.3.
Isotype	IgG
Molecular Weight	Protein Mw: 38kDa Observed Mw: 60kDa
Storage Instruction	Store at -20°C for up to 1 year from the date of receipt, and avoid repeat freeze-thaw cycles.

TARGET INFORMATION

Gene Symbol	IGHA1 Uniprot ID= IGHA1_HUMAN "
Immunogen Region	122-353 aa
Immunogen Sequence	CCHPRLSLHRPALEDLLLGS EANLTCTLTGLRDASGVTFT WTPSSGKSAVQGPPERDLGG CYSVSSVLPGCAEPWNHGKT FTCTAAYPESKTPLTATLSK SGNTFRPEVHLLPPPEELA LNELVTLTCLARGFSPKDVLRVWLQGSQELPREKYLTWAS RQEPSQGGTTTFAVTSILRVA AEDWKKGDTFSCMVGHEALP LAFTQKTIDRLADWQMPPPY VVLDLPQETLEE
Specificity	A synthetic peptide corresponding to a sequence within amino acids 122-353 of human IGHA1 (P01876).

ADDITIONAL INFORMATION

Note **STRICTLY FOR FURTHER SCIENTIFIC RESEARCH USE ONLY (RUO). MUST NOT TO BE USED IN DIAGNOSTIC OR THERAPEUTIC APPLICATIONS.**



Western blot analysis of lysates from SH-SY5Y cells, using IGHA1 Rabbit pAb (STJ11105741) at 1:2000 dilution.
 Secondary antibody: HRP-conjugated Goat anti-Rabbit IgG (H+L) (STJS000856) at 1:10000 dilution.
 Lysates/proteins: 25 Mu g per lane.
 Blocking buffer: 3% nonfat dry milk in TBST.
 Detection: ECL Basic Kit
 Exposure time: 180s.