

Anti-SLC27A6 antibody (370-619) (STJ11105737)

GENERAL INFORMATION

Product Type	Primary antibodies
Applications	WB/ELISA
Host / Source	Rabbit
Reactivity	Human/Mouse

PRODUCT PROPERTIES

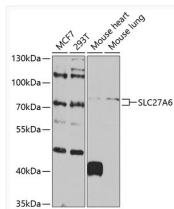
Clonality	Polyclonal
Concentration	Lot specific
Conjugation	Unconjugated
Purification	Affinity purification
Dilution Range	WB:1:500-1:2000 ELISA:Recommended starting concentration is 1 Mu g/mL. Please optimize the concentration based on your specific assay requirements.
Formulation	PBS with 0.05% Proclin300, 50% Glycerol, pH 7.3.
Isotype	IgG
Molecular Weight	Protein Mw: 70kDa Observed Mw: 70kDa
Storage Instruction	Store at-20°C for up to 1 year from the date of receipt, and avoid repeat freeze-thaw cycles.

TARGET INFORMATION

Gene ID	28965
Gene Symbol	SLC27A6
UniProt ID	S27A6_HUMAN
Immunogen Region	370-619
Immunogen Sequence	FMNYTGRIGAIGRTNLFYKL LSTFDLIKDYDFQKDEPMRNE QGWCIHVKKGEPGLLISRVN AKNPFPGYAGPYKHTKDKLL CDVFKKGDVYLNLTGDLIVQD QDNFLYFWDRTGDTFRWKGE NVATTEVADVIGMLDFIQEA NVYGVVAISGYEGFRAGMASII LKPNTSLDLEKYYEQVVTFL PAYACPRFLRIQEKMEATGT FKLLKHQLVEDGFNPLKISE PLYFMDNLKKSYYLLTREL
Specificity	Recombinant fusion protein containing a sequence corresponding to amino acids 370-619 of human SLC27A6 (NP_054750.1).

ADDITIONAL INFORMATION

Note **STRICTLY FOR FURTHER SCIENTIFIC RESEARCH USE ONLY (RUO). MUST NOT TO BE USED IN DIAGNOSTIC OR THERAPEUTIC APPLICATIONS.**



Western blot analysis of various lysates using SLC27A6 Rabbit pAb (STJ11105737) at 1:1000 dilution.

Secondary antibody: HRP-conjugated Goat anti-Rabbit IgG (H+L) (STJS000856) at 1:10000 dilution.

Lysates/proteins: 25 Mu g per lane.

Blocking buffer: 3% nonfat dry milk in TBST.

Detection: ECL Basic Kit

Exposure time: 90s.