

Anti-IKBIP antibody (115-350) (STJ11105730)

GENERAL INFORMATION

Product Type	Primary antibodies
Applications	WB/IF/ICC/ELISA
Host / Source	Rabbit
Reactivity	Mouse/Rat

PRODUCT PROPERTIES

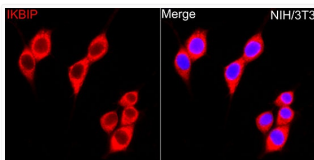
Clonality	Polyclonal
Concentration	Lot specific
Conjugation	Unconjugated
Purification	Affinity purification
Dilution Range	WB:1:1000-1:5000 IF/CC:1:100-1:500 ELISA:Recommended starting concentration is 1 Mu g/mL. Please optimize the concentration based on your specific assay requirements.
Formulation	PBS with 0.02% Sodium Azide, 50% Glycerol, pH 7.3.
Isotype	IgG
Molecular Weight	Protein Mw: 39kDa Observed Mw: 39kDa
Storage Instruction	Store at -20°C for up to 1 year from the date of receipt, and avoid repeat freeze-thaw cycles.

TARGET INFORMATION

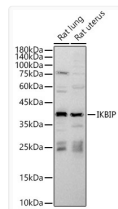
Gene ID	121457
Gene Symbol	IKBIP
UniProt ID	IKIP_HUMAN
Immunogen Region	115-350
Immunogen Sequence	IIAHLKRLQEEINEVKTWSN RITEKQDILNNSLTLSQDI TKVDQSTTSMAKDVGLKITS VKTDIRRISGLVTDVISLTD SVQELENKIEKVEKNTVKNI GDLLSSSIDRTATLRKTASE NSQRINSVKKTLELKSDFD KHTDRFLSLEGDRAKVLKTV TFANDLKPVKVYNLKKDFSRL EPLVNDLTLRIGRLVTDLLQ REKEIAFLSEKISNLTIVQA EIKDIKDEIAHSDMM
Specificity	Recombinant fusion protein containing a sequence corresponding to amino acids 115-350 of human IKBIP (NP_963906.1).

ADDITIONAL INFORMATION

Note STRICTLY FOR FURTHER SCIENTIFIC RESEARCH USE ONLY (RUO). MUST NOT TO BE USED IN DIAGNOSTIC OR THERAPEUTIC APPLICATIONS.



Immunofluorescence analysis of NIH/3T3 cells using IKBIP Rabbit polyclonal antibody (STJ11105730) at dilution of 1:300 (40x lens). Secondary antibody: Cy3 Goat Anti-Rabbit IgG (H+L) at 1:500 dilution. Blue: DAPI for nuclear staining.



Western blot analysis of various lysates using IKBIP Rabbit polyclonal antibody (STJ11105730) at 1:2000 dilution. Secondary antibody: HRP Goat Anti-Rabbit IgG (H+L) (STJS000856) at 1:10000 dilution. Lysates/ proteins: 25 Mu g per lane. Blocking buffer: 3 % nonfat dry milk in TBST. Detection: ECL Basic Kit. Exposure time: 5s.