

Anti-RNF8 antibody (230-485) (STJ11105728)

GENERAL INFORMATION

Product Type	Primary antibodies
Applications	WB/ELISA
Host / Source	Rabbit
Reactivity	Human/Mouse/Rat

PRODUCT PROPERTIES

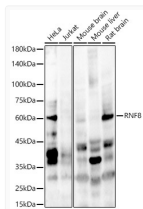
Clonality	Polyclonal
Concentration	Lot specific
Conjugation	Unconjugated
Purification	Affinity purification
Dilution Range	WB:1:100-1:500 ELISA:Recommended starting concentration is 1 µg/mL. Please optimize the concentration based on your specific assay requirements.
Formulation	PBS with 0.02% Sodium Azide, 50% Glycerol, pH 7.3.
Isotype	IgG
Molecular Weight	Protein Mw: 56kDa Observed Mw: 60kDa
Storage Instruction	Store at -20°C for up to 1 year from the date of receipt, and avoid repeat freeze-thaw cycles.

TARGET INFORMATION

Gene ID	9025
Gene Symbol	RNF8
UniProt ID	RNF8_HUMAN
Immunogen Region	230-485
Immunogen Sequence	VHHEQKASNSSASQRSLOMF KVTMSRILRLKIQMQEKEHEA VMNVKKQTQKGNSSKKVVQME QELQDLQSQLCAEQAAQQAR VEQLEKTFQEEEQHLOGLEI AQGEKDLKQQLAQAALQEHWA LMEELNRSKKDFEAIIQAKN KELEQTKEEKEKMQAQKEEV LSHMNDVLENLQICSEY FIEAVTLNCAHSFCSYCINE WMKRKIECPCRKDIKSKTY SLVLDNCINKMVMNNLSSEV
Specificity	Recombinant fusion protein containing a sequence corresponding to amino acids 230-485 of human RNF8 (NP_003949.1).

ADDITIONAL INFORMATION

Note **STRICTLY FOR FURTHER SCIENTIFIC RESEARCH USE ONLY (RUO). MUST NOT TO BE USED IN DIAGNOSTIC OR THERAPEUTIC APPLICATIONS.**



Western blot analysis of various lysates, using RNF8 antibody (STJ11105728) at 1:400 dilution. Secondary antibody: HRP Goat Anti-Rabbit IgG (H+L) (STJS000856) at 1:10000 dilution. Lysates/proteins: 25 µg per lane. Blocking buffer: 3% nonfat dry milk in TBST. Detection: ECL Enhanced Kit. Exposure time: 90s.