

Anti-SRSF4 antibody (1-180) (STJ11105724)

GENERAL INFORMATION

Product Type	Primary antibodies
Applications	WB/ELISA
Host / Source	Rabbit
Reactivity	Mouse/Rat

PRODUCT PROPERTIES

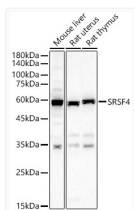
Clonality	Polyclonal
Concentration	Lot specific
Conjugation	Unconjugated
Purification	Affinity purification
Dilution Range	WB:1:500-1:2000 ELISA:Recommended starting concentration is 1 μ g/mL. Please optimize the concentration based on your specific assay requirements.
Formulation	PBS with 0.02% Sodium Azide, 50% Glycerol, pH 7.3.
Isotype	IgG
Molecular Weight	Protein Mw: 57kDa Observed Mw: 57kDa
Storage Instruction	Store at -20°C for up to 1 year from the date of receipt, and avoid repeat freeze-thaw cycles.

TARGET INFORMATION

Gene ID	6429
Gene Symbol	SRSF4
UniProt ID	SRSF4_HUMAN
Immunogen Region	1-180
Immunogen Sequence	MPRVYIGRLSYQARERDVER FFKGYGKILEVDLKNYGFV EFDDLRDADDAVYELNGKDL CGERVIVEHARGPRRDGSYG SGRSGYGYRRSGRDKYGPPT RTEYRLIVENLSSRCSWQDL KDYMRQAGEVTYADAHKGRK NEGVIEFVSYSMDMKRALEKL DGTEVNGRKIRLVEDKPGSR
Specificity	Recombinant fusion protein containing a sequence corresponding to amino acids 1-180 of human SRSF4 (NP_005617.2).

ADDITIONAL INFORMATION

Note STRICTLY FOR FURTHER SCIENTIFIC RESEARCH USE ONLY (RUO). MUST NOT TO BE USED IN DIAGNOSTIC OR THERAPEUTIC APPLICATIONS.



Western blot analysis of various lysates, using SRSF4 Rabbit polyclonal antibody (STJ11105724) at 1:2000 dilution. Secondary antibody: HRP Goat Anti-Rabbit IgG (H+L) (STJS000856) at 1:10000 dilution. Lysates/proteins: 25 μ g per lane. Blocking buffer: 3% nonfat dry milk in TBST. Detection: ECL Basic Kit. Exposure time: 60s.