

Anti-CD63 antibody (103-203) (STJ11105705)

GENERAL INFORMATION

Product Type	Primary antibodies
Applications	WB/IHC-P/IF/ICC/ELISA
Host / Source	Rabbit
Reactivity	Human

PRODUCT PROPERTIES

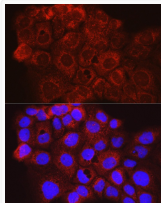
Clonality	Polyclonal
Concentration	Lot specific
Conjugation	Unconjugated
Purification	Affinity purification
Dilution Range	WB:1:100-1:500 IHC-P:1:50-1:200 IHC-P:1:50-1:100 ELISA:Recommended starting concentration is 1 Mu g/mL. Please optimize the concentration based on your specific assay requirements.
Formulation	PBS with 0.09% Sodium Azide, 50% Glycerol, pH 7.3.
Isotype	IgG
Molecular Weight	Protein Mw: 26kDa Observed Mw: 30-65kDa
Storage Instruction	Store at -20°C for up to 1 year from the date of receipt, and avoid repeat freeze-thaw cycles.

TARGET INFORMATION

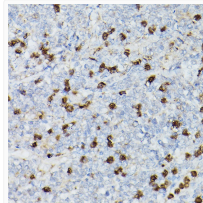
Gene ID	967
Gene Symbol	CD63
UniProt ID	CD63_HUMAN
Immunogen Region	103-203
Immunogen Sequence	AGYVFRDKVMSEFNNNFRQQ MENYPKNNHTASILDRMQAD FKCCGAANYTDWEKIPSMK NRVPDSCCINVTGCGINFN EKAIHKEGCVKEIGGWLRKN V
Specificity	Recombinant fusion protein containing a sequence corresponding to amino acids 103-203 of human CD63 (NP_001771.1).

ADDITIONAL INFORMATION

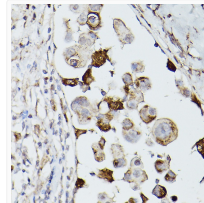
Note **STRICTLY FOR FURTHER SCIENTIFIC RESEARCH USE ONLY (RUO). MUST NOT TO BE USED IN DIAGNOSTIC OR THERAPEUTIC APPLICATIONS.**



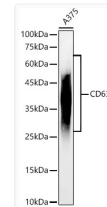
Immunofluorescence analysis of A431 cells using CD63 Rabbit polyclonal antibody (STJ11105705) at dilution of 1:100 (40x lens). Secondary antibody: Cy3 Goat Anti-Rabbit IgG (H+L) at 1:500 dilution. Blue: DAPI for nuclear staining.



Immunohistochemistry analysis of CD63 in paraffin-embedded Human lymphoma using CD63 Rabbit polyclonal antibody (STJ11105705) at dilution of 1:100 (40x lens). Perform high pressure antigen retrieval with 10 mM citrate buffer pH 6. 0 before commencing with immunohistochemistry staining protocol.



Immunohistochemistry analysis of CD63 in paraffin-embedded human breast cancer using CD63 Rabbit polyclonal antibody (STJ11105705) at dilution of 1:100 (40x lens). Perform high pressure antigen retrieval with 10 mM citrate buffer pH 6. 0 before commencing with immunohistochemistry staining protocol.



Western blot analysis of lysates from A375 cells, using CD63 Rabbit polyclonal antibody (STJ11105705) at 1:400 dilution. Secondary antibody: HRP Goat Anti-Rabbit IgG (H+L) (STJS000856) at 1:10000 dilution. Lysates/proteins: 25 Mu g per lane. Blocking buffer: 3% nonfat dry milk in TBST. Detection: ECL Basic Kit. Exposure time: 60s.