

## Anti-SYN1 antibody (400-500) (STJ11105704)

### GENERAL INFORMATION

Product Type	Primary antibodies
Applications	WB/IF/ICC/ELISA
Host / Source	Rabbit
Reactivity	Human/Mouse/Rat

### PRODUCT PROPERTIES

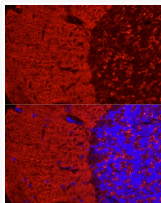
Clonality	Polyclonal
Concentration	Lot specific
Conjugation	Unconjugated
Purification	Affinity purification
Dilution Range	WB:1:500-1:1000 IF/CC:1:50-1:200 ELISA:Recommended starting concentration is 1 $\mu$ g/mL. Please optimize the concentration based on your specific assay requirements.
Formulation	PBS with 0.02% Sodium Azide, 50% Glycerol, pH 7.3.
Isotype	IgG
Molecular Weight	Protein Mw: 74kDa Observed Mw: 77kDa
Storage Instruction	Store at -20°C for up to 1 year from the date of receipt, and avoid repeat freeze-thaw cycles.

### TARGET INFORMATION

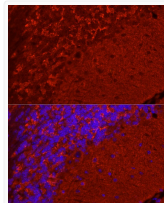
Gene ID	<a href="#">6853</a>
Gene Symbol	<a href="#">SYN1</a>
UniProt ID	<a href="#">SYN1_HUMAN</a>
Immunogen Region	400-500
Immunogen Sequence	DEDKQLIVELVVNKMAQALP RQRQRDASPGRGSHGQTSPS GALPLGRQTSQQPAGPPAQQ RPPPQGGPPQPGPGPQRQGP PLQQRPPPQGGQHLGSLGPP A
Specificity	A synthetic peptide corresponding to a sequence within amino acids 400-500 of human SYN1 (NP_008881.2).

### ADDITIONAL INFORMATION

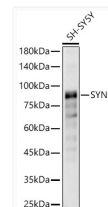
Note **STRICTLY FOR FURTHER SCIENTIFIC RESEARCH USE ONLY (RUO). MUST NOT TO BE USED IN DIAGNOSTIC OR THERAPEUTIC APPLICATIONS.**



Immunofluorescence analysis of rat brain using SYN1 Rabbit polyclonal antibody (STJ11105704) at dilution of 1:50 (40x lens). Blue: DAPI for nuclear staining.



Immunofluorescence analysis of mouse brain using SYN1 Rabbit polyclonal antibody (STJ11105704) at dilution of 1:50 (40x lens). Blue: DAPI for nuclear staining.



Western blot analysis of SH-SY5Y, using SYN1 Rabbit polyclonal antibody (STJ11105704) at 1:10000 dilution. Secondary antibody: HRP Goat Anti-Rabbit IgG (H+L) (STJS000856) at 1:10000 dilution. Lysates/proteins: 25  $\mu$ g per lane. Blocking buffer: 3% nonfat dry milk in TBST. Detection: ECL Basic Kit. Exposure time: 20s.