

## Anti-DMD antibody (3586-3685) [S5697RM] (STJ11105697)

### GENERAL INFORMATION

Product Type	Primary antibodies
Applications	IHC-P/IF/ICC/ELISA
Host / Source	Rabbit
Reactivity	Human/Mouse/Rat

### PRODUCT PROPERTIES

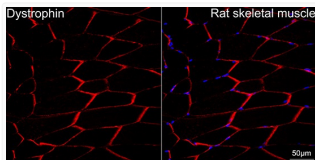
Clonality	Monoclonal
Concentration	Lot specific
Conjugation	Unconjugated
Purification	Affinity purification
Dilution Range	IHC-P:1:50-1:200 IF/CC:1:50-1:200 ELISA:Recommended starting concentration is 1 Mu g/mL. Please optimize the concentration based on your specific assay requirements.
Formulation	PBS with 0.02% Sodium Azide, 0.05% BSA, 50% Glycerol, pH 7.3.
Isotype	IgG
Molecular Weight	Protein Mw: 427kDa Observed Mw: Refer to figures
Storage Instruction	Store at -20°C for up to 1 year from the date of receipt, and avoid repeat freeze-thaw cycles.

### TARGET INFORMATION

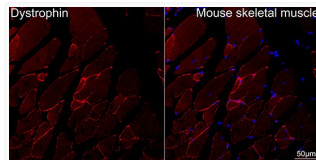
Gene ID	<a href="#">1756</a>
Gene Symbol	<a href="#">DMD</a>
UniProt ID	<a href="#">DMD_HUMAN</a>
Immunogen Region	3586-3685
Immunogen Sequence	LESQLHRLRQLLEQPQAEAK VNGTTVSSPSTSLQRSDDSSQ PMLLRVVGSTSDSMGEEDL LSPPPQDTSTGLEEVMEQLNNSFPSSRRGRNTPGKPMREDTM
Specificity	A synthetic peptide corresponding to a sequence within amino acids 3586-3685 of human Dystrophin (P11532).

### ADDITIONAL INFORMATION

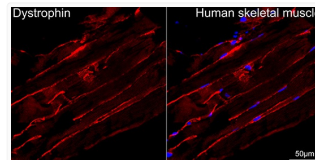
Note STRICTLY FOR FURTHER SCIENTIFIC RESEARCH USE ONLY (RUO). MUST NOT TO BE USED IN DIAGNOSTIC OR THERAPEUTIC APPLICATIONS.



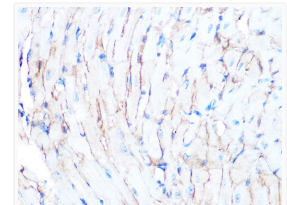
Confocal imaging of paraffin-embedded Rat skeletal muscle tissue using Dystrophin Rabbit monoclonal antibody (STJ11105697, dilution 1:100) followed by a further incubation with Cy3 Goat Anti-Rabbit IgG (H+L) (dilution 1:500) (Red). DAPI was used for nuclear staining (Blue). High pressure antigen retrieval performed with 0.01M Citrate Buffer (pH 6.0) prior to IF staining. Objective: 40x.



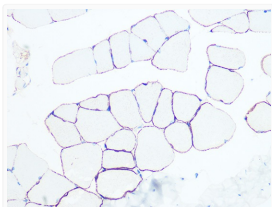
Confocal imaging of paraffin-embedded Mouse skeletal muscle tissue using Dystrophin Rabbit monoclonal antibody (STJ11105697, dilution 1:100) followed by a further incubation with Cy3 Goat Anti-Rabbit IgG (H+L) (dilution 1:500) (Red). DAPI was used for nuclear staining (Blue). High pressure antigen retrieval performed with 0.01M Citrate Buffer (pH 6.0) prior to IF staining. Objective: 40x.



Confocal imaging of paraffin-embedded Human skeletal muscle tissue using Dystrophin Rabbit monoclonal antibody (STJ11105697, dilution 1:100) followed by a further incubation with Cy3 Goat Anti-Rabbit IgG (H+L) (dilution 1:500) (Red). DAPI was used for nuclear staining (Blue). High pressure antigen retrieval performed with 0.01M Citrate Buffer (pH 6.0) prior to IF staining. Objective: 40x.



Immunohistochemistry analysis of Dystrophin in paraffin-embedded mouse heart using Dystrophin Rabbit monoclonal antibody (STJ11105697) at dilution of 1:100 (40x lens). Perform microwave antigen retrieval with 10 mM PBS buffer pH 7.2 before commencing with immunohistochemistry staining protocol.



Immunohistochemistry analysis of Dystrophin in paraffin-embedded rat skeletal muscle using Dystrophin Rabbit monoclonal antibody (STJ11105697) at dilution of 1:100 (40x lens). Perform microwave antigen retrieval with 10 mM PBS buffer pH 7.2 before commencing with immunohistochemistry staining protocol.