

Anti-SAR1B antibody (1-198) (STJ11105696)

GENERAL INFORMATION

Product Type	Primary antibodies
Applications	WB/ELISA
Host / Source	Rabbit
Reactivity	Human

PRODUCT PROPERTIES

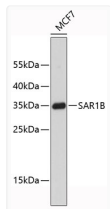
Clonality	Polyclonal
Concentration	Lot specific
Conjugation	Unconjugated
Purification	Affinity purification
Dilution Range	WB:1:500-1:2000 ELISA:Recommended starting concentration is 1 µg/mL. Please optimize the concentration based on your specific assay requirements.
Formulation	PBS with 0.01% Thimerosal, 50% Glycerol, pH 7.3.
Isotype	IgG
Molecular Weight	Protein Mw: 22kDa Observed Mw: Refer to figures
Storage Instruction	Store at -20°C for up to 1 year from the date of receipt, and avoid repeat freeze-thaw cycles.

TARGET INFORMATION

Gene ID	51128
Gene Symbol	SAR1B
UniProt ID	SAR1B_HUMAN
Immunogen Region	1-198
Immunogen Sequence	MSFIFDWIYSGFSSVLQFLG LYKKTGKLVFLGLDNAGKTT LLHMLKDDRLGQHVPTLHPT SEELTIAGMTFTTFDLGGHY QARRVWKNYLPAINGIVFLV DCADHERLLESKEELDSLMT DETIANVPILILGNKIDRPE AISEERLREMFGLYGQTTGK GSISLKELNARPLEVFMCSV LKRQGYGEGFRWMAQYID
Specificity	Recombinant fusion protein containing a sequence corresponding to amino acids 1-198 of human SAR1B (NP_057187.1).

ADDITIONAL INFORMATION

Note **STRICTLY FOR FURTHER SCIENTIFIC RESEARCH USE ONLY (RUO). MUST NOT TO BE USED IN DIAGNOSTIC OR THERAPEUTIC APPLICATIONS.**



Western blot analysis of lysates from MCF-7 cells, using SAR1B Rabbit polyclonal antibody (STJ11105696). Secondary antibody: HRP Goat Anti-Rabbit IgG (H+L) (STJS000856) at 1:10000 dilution. Lysates/proteins: 25 µg per lane. Blocking buffer: 3% nonfat dry milk in TBST.