

Anti-DAB2 antibody (340-580 aa) (STJ11105686)

GENERAL INFORMATION

Product Type	Primary antibodies
Applications	WB/FC/ELISA
Host / Source	Rabbit
Reactivity	Human

PRODUCT PROPERTIES

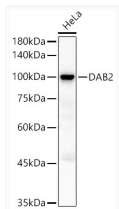
Clonality	Polyclonal
Concentration	Lot specific
Conjugation	Unconjugated
Purification	Affinity purification
Dilution Range	WB:1:500-1:1000 FC:1:20-1:50 ELISA:Recommended starting concentration is 1 Mu g/mL. Please optimize the concentration based on your specific assay requirements.
Formulation	PBS with 0.05% Proclin300, 50% Glycerol, pH 7.3.
Isotype	IgG
Molecular Weight	Protein Mw: 82kDa Observed Mw: 96kDa
Storage Instruction	Store at -20°C for up to 1 year from the date of receipt, and avoid repeat freeze-thaw cycles.

TARGET INFORMATION

Gene ID	1601
Gene Symbol	DAB2
UniProt ID	DAB2_HUMAN
Immunogen Region	340-580 aa
Immunogen Sequence	VDYFGQQFDQISNRTGKQEA QAGPWPFSSSQTPAVRTQN GVSEREQNGFSVKSSPNPFV GSPPKGLSIQNGVKQDLESS VQSSPHDSIAIIPPPQSTKP GRGRRTAKSSANDLLASDIF APPVSEPSGQASPTGQPTAL QPNPLDLFKTSAPAPVGPLV GLGGVTVTLQAGPWNTASL VFNQSPSMAPGAMMGQPSG FSQPVIFGTSPAVSGWVWQPS PFAASTPPPVPVWVWGPSAS
Specificity	A synthetic peptide corresponding to a sequence within amino acids 340-580 of human DAB2 (NP_001334.2).

ADDITIONAL INFORMATION

Note STRICTLY FOR FURTHER SCIENTIFIC RESEARCH USE ONLY (RUO). MUST NOT TO BE USED IN DIAGNOSTIC OR THERAPEUTIC APPLICATIONS.



Western blot analysis of lysates from HeLa cells, using DAB2 Rabbit polyclonal antibody (STJ11105686) at 1:500 dilution. Secondary antibody: HRP Goat Anti-Rabbit IgG (H+L) (STJS000856) at 1:10000 dilution. Lysates/proteins: 25 Mu g per lane. Blocking buffer: 3% nonfat dry milk in TBST. Detection: ECL Basic Kit. Exposure time: 10s.