

Anti-NDUFC2 antibody (1-100) (STJ11105681)

GENERAL INFORMATION

Product Type	Primary antibodies
Applications	WB/ELISA
Host / Source	Rabbit
Reactivity	Human/Mouse/Rat

PRODUCT PROPERTIES

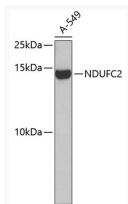
Clonality	Polyclonal
Concentration	Lot specific
Conjugation	Unconjugated
Purification	Affinity purification
Dilution Range	WB:1:500-1:2000 ELISA:Recommended starting concentration is 1 Mu g/mL. Please optimize the concentration based on your specific assay requirements.
Formulation	PBS with 0.01% Thimerosal, 50% Glycerol, pH 7.3.
Isotype	IgG
Molecular Weight	Protein Mw: 14kDa Observed Mw: 14kDa
Storage Instruction	Store at -20°C for up to 1 year from the date of receipt, and avoid repeat freeze-thaw cycles.

TARGET INFORMATION

Gene ID	4718
Gene Symbol	NDUFC2
UniProt ID	NDUC2_HUMAN
Immunogen Region	1-100
Immunogen Sequence	MIARRNPEPLRFLPDEARSL PPPKLTDPRLLYIGFLGYCS GLIDNLIRRRPIATAGLHRQ LLYITAFFFAGYYLVKREDY LYAVRDREMFGYMKLHPEDF
Specificity	A synthetic peptide corresponding to a sequence within amino acids 1-100 of human NDUFC2 (NP_004540.1).

ADDITIONAL INFORMATION

Note STRICTLY FOR FURTHER SCIENTIFIC RESEARCH USE ONLY (RUO). MUST NOT TO BE USED IN DIAGNOSTIC OR THERAPEUTIC APPLICATIONS.



Western blot analysis of lysates from A-549 cells, using NDUFC2 Rabbit polyclonal antibody (STJ11105681). Secondary antibody: HRP Goat Anti-Rabbit IgG (H+L) (STJS000856) at 1:10000 dilution. Lysates/proteins: 25 Mu g per lane. Blocking buffer: 3% nonfat dry milk in TBST.