

Anti-MRPL52 antibody (24-123) (STJ11105663)

GENERAL INFORMATION

Product Type	Primary antibodies
Applications	WB/ELISA
Host / Source	Rabbit
Reactivity	Human

PRODUCT PROPERTIES

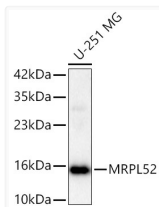
Clonality	Polyclonal
Concentration	Lot specific
Conjugation	Unconjugated
Purification	Affinity purification
Dilution Range	WB:1:500-1:1000 ELISA:Recommended starting concentration is 1 Mu g/mL. Please optimize the concentration based on your specific assay requirements.
Formulation	PBS with 0.05% Proclin300, 50% Glycerol, pH 7.3.
Isotype	IgG
Molecular Weight	Protein Mw: 14kDa Observed Mw: 14kDa
Storage Instruction	Store at -20°C for up to 1 year from the date of receipt, and avoid repeat freeze-thaw cycles.

TARGET INFORMATION

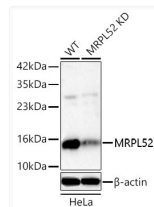
Gene ID	122704
Gene Symbol	MRPL52
UniProt ID	RM52_HUMAN
Immunogen Region	24-123
Immunogen Sequence	GGQWRLQQGLAANPSGYGPL TELPDWSYADGRPAPPMKGQ LRRKAERETFARRVLLSQE MDAGLQAWQLRQQKLQEEQR KQENALKPKGASLKSPLPSQ
Specificity	A synthetic peptide corresponding to a sequence within amino acids 24-123 of human MRPL52 (NP_848026.1).

ADDITIONAL INFORMATION

Note **STRICTLY FOR FURTHER SCIENTIFIC RESEARCH USE ONLY (RUO). MUST NOT TO BE USED IN DIAGNOSTIC OR THERAPEUTIC APPLICATIONS.**



Western blot analysis of lysates from U-251 MG cells using [KD Validated] MRPL52 Rabbit polyclonal antibody (STJ11105663) at 1:1000 dilution. Secondary antibody:HRP Goat Anti-Rabbit IgG (H+L) (STJS000856) at 1:10000 dilution. Lysates/proteins: 25 Mu g per lane. Blocking buffer: 3% nonfat dry milk in TBST. Detection:ECL Basic Kit. Exposure time:45s.



Western blot analysis of lysates from wild type (WT) and MRPL52 knockdown (KD) HeLa cells using [KD Validated] MRPL52 Rabbit polyclonal antibody (STJ11105663) at 1:1000 dilution. Secondary antibody:HRP Goat Anti-Rabbit IgG (H+L) (STJS000856) at 1:10000 dilution. Lysates/proteins: 25 Mu g per lane. Blocking buffer: 3% nonfat dry milk in TBST. Detection:ECL Basic Kit. Exposure time: 45s.