

Anti-COL1A1 antibody (1359-1464) (STJ11105651)

GENERAL INFORMATION

Product Type	Primary antibodies
Applications	WB/IF/ICC/ELISA
Host / Source	Rabbit
Reactivity	Human/Mouse

PRODUCT PROPERTIES

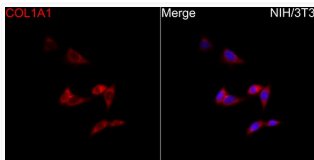
Clonality	Polyclonal
Concentration	Lot specific
Conjugation	Unconjugated
Purification	Affinity purification
Dilution Range	WB:1:1000-1:5000 IF/CC:1:100-1:500 ELISA:Recommended starting concentration is 1 Mu g/mL. Please optimize the concentration based on your specific assay requirements.
Formulation	PBS with 0.05% Proclin300, 50% Glycerol, pH 7.3.
Isotype	IgG
Molecular Weight	Protein Mw: 139kDa Observed Mw: 220kDa
Storage Instruction	Store at -20°C for up to 1 year from the date of receipt, and avoid repeat freeze-thaw cycles.

TARGET INFORMATION

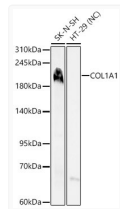
Gene ID	1277
Gene Symbol	COL1A1
UniProt ID	CO1A1_HUMAN
Immunogen Region	1359-1464
Immunogen Sequence	STEASQNIYHCKNSVAYMD QQTGNLKKALLQGSNEIEI RAEGNSRFYTSVTVDGCTSH TGAWGKTVIEYKTTKTSRLP IIDVAPLDVGAPDQEFQFDV GPCVFL
Specificity	Recombinant fusion protein containing a sequence corresponding to amino acids 1359-1464 of human COL1A1 (NP_000079.2).

ADDITIONAL INFORMATION

Note STRICTLY FOR FURTHER SCIENTIFIC RESEARCH USE ONLY (RUO). MUST NOT TO BE USED IN DIAGNOSTIC OR THERAPEUTIC APPLICATIONS.



Immunofluorescence analysis of NIH/3T3 cells using COL1A1 Rabbit polyclonal antibody (STJ11105651) at a dilution of 1:250 (40x lens). Secondary antibody: Cy3 Goat Anti-Rabbit IgG (H+L) at 1:500 dilution. Blue: DAPI for nuclear staining.



Western blot analysis of various lysates using COL1A1 Rabbit polyclonal antibody (STJ11105651) at 1:3000 dilution. Secondary antibody: HRP Goat Anti-Rabbit IgG (H+L) (STJS000856) at 1:10000 dilution. Lysates/proteins: 25 Mu g per lane. Blocking buffer: 3% nonfat dry milk in TBST. Detection: ECL Basic Kit. Negative control (NC) : HT-29. Exposure time: 30s.