

## Anti-TREM1 antibody (1-100) (STJ11105630)

### GENERAL INFORMATION

Product Type	Primary antibodies
Applications	IF/ICC/ELISA
Host / Source	Rabbit
Reactivity	Human

### PRODUCT PROPERTIES

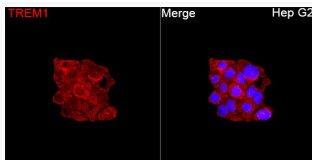
Clonality	Polyclonal
Concentration	Lot specific
Conjugation	Unconjugated
Purification	Affinity purification
Dilution Range	IF/ICC:1:50-1:200 ELISA:Recommended starting concentration is 1 µg/mL. Please optimize the concentration based on your specific assay requirements.
Formulation	PBS with 0.05% Proclin300, 50% Glycerol, pH 7.3.
Isotype	IgG
Molecular Weight	Protein Mw: 26kDa Observed Mw: Refer to figures
Storage Instruction	Store at -20°C for up to 1 year from the date of receipt, and avoid repeat freeze-thaw cycles.

### TARGET INFORMATION

Gene ID	<a href="#">54210</a>
Gene Symbol	<a href="#">TREM1</a>
UniProt ID	<a href="#">TREM1_HUMAN</a>
Immunogen Region	1-100
Immunogen Sequence	MRKTRLWGLLWMLFVSELRA ATKLTEEKYELKEGQTLQDKV CDYTLKFASSQKAWQIIRD GEMPKTLACTERPSKNSHPV QVGRRILEDYHDHGLLRVRM
Specificity	A synthetic peptide corresponding to a sequence within amino acids 1-100 of human human TREM1 (NP_061113.1).

### ADDITIONAL INFORMATION

Note STRICTLY FOR FURTHER SCIENTIFIC RESEARCH USE ONLY (RUO). MUST NOT TO BE USED IN DIAGNOSTIC OR THERAPEUTIC APPLICATIONS.



Immunofluorescence analysis of Hep G2 cells using TREM1 Rabbit polyclonal antibody (STJ11105630) at a dilution of 1:100 (40x lens). Secondary antibody: Cy3 Goat Anti-Rabbit IgG (H+L) at 1:500 dilution. Blue: DAPI for nuclear staining.