

Anti-ID2 antibody (1-100) (STJ11105624)

GENERAL INFORMATION

Product Type	Primary antibodies
Applications	WB/ELISA
Host / Source	Rabbit
Reactivity	Human

PRODUCT PROPERTIES

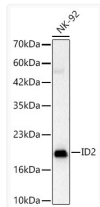
Clonality	Polyclonal
Concentration	Lot specific
Conjugation	Unconjugated
Purification	Affinity purification
Dilution Range	WB:1:1000-1:5000 ELISA:Recommended starting concentration is 1 μ g/mL. Please optimize the concentration based on your specific assay requirements.
Formulation	PBS with 0.05% Proclin300, 50% Glycerol, pH 7.3.
Isotype	IgG
Molecular Weight	Protein Mw: 15kDa Observed Mw: 20kDa
Storage Instruction	Store at -20°C for up to 1 year from the date of receipt, and avoid repeat freeze-thaw cycles.

TARGET INFORMATION

Gene ID	3398
Gene Symbol	ID2
UniProt ID	ID2_HUMAN
Immunogen Region	1-100
Immunogen Sequence	MKAFSPVRSVRKNSLSDHSL GISRSKTPVDDPMSLLYNMN DCYSKCLKELVPSIPQNKKVS KMEILQHVIDYILDQLIQLD SHPTIVSLHHQRPGQNQASR
Specificity	A synthetic peptide corresponding to a sequence within amino acids 1-100 of human ID2 (NP_002157.2).

ADDITIONAL INFORMATION

Note STRICTLY FOR FURTHER SCIENTIFIC RESEARCH USE ONLY (RUO). MUST NOT TO BE USED IN DIAGNOSTIC OR THERAPEUTIC APPLICATIONS.



Western blot analysis of lysates from NK-92 cells using ID2 Rabbit polyclonal antibody (STJ11105624) at 1:2000 dilution. Secondary antibody: HRP Goat Anti-Rabbit IgG (H+L) (STJS000856) at 1:10000 dilution. Lysates/proteins: 25 μ g per lane. Blocking buffer: 3% nonfat dry milk in TBST. Detection: ECL Basic Kit. Exposure time: 90s.