

Anti-NKX2-2 antibody (102-201) (STJ11105621)

GENERAL INFORMATION

Product Type	Primary antibodies
Applications	WB/ELISA
Host / Source	Rabbit
Reactivity	Human

PRODUCT PROPERTIES

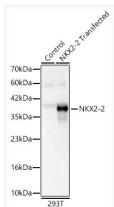
Clonality	Polyclonal
Concentration	Lot specific
Conjugation	Unconjugated
Purification	Affinity purification
Dilution Range	WB:1:1000-1:5000 ELISA:Recommended starting concentration is 1 Mu g/mL. Please optimize the concentration based on your specific assay requirements.
Formulation	PBS with 0.05% Proclin300, 50% Glycerol, pH 7.3.
Isotype	IgG
Molecular Weight	Protein Mw: 30kDa Observed Mw: 40kDa
Storage Instruction	Store at -20°C for up to 1 year from the date of receipt, and avoid repeat freeze-thaw cycles.

TARGET INFORMATION

Gene ID	4821
Gene Symbol	NKX2-2
UniProt ID	NKX22_HUMAN
Immunogen Region	102-201
Immunogen Sequence	KSPEPSADESPDNDKETPGG GGDAGKKRKRRLVFSKAQTY ELERRFRQQRYSAPEREHL ASLIRLPTQVKIWFQNHRY KMKRARAEGMEVTPSPR
Specificity	A synthetic peptide corresponding to a sequence within amino acids 102-201 of human NKX2-2 (NP_002500.1).

ADDITIONAL INFORMATION

Note STRICTLY FOR FURTHER SCIENTIFIC RESEARCH USE ONLY (RUO). MUST NOT TO BE USED IN DIAGNOSTIC OR THERAPEUTIC APPLICATIONS.



Western blot analysis of lysates from wild type (WT) and 293T cells transfected with NKX2-2 using NKX2-2 Rabbit polyclonal antibody (STJ11105621) at 1:2000 dilution. Secondary antibody: HRP Goat Anti-Rabbit IgG (H+L) (STJS000856) at 1:10000 dilution. Lysates/proteins: 25 Mu g per lane. Blocking buffer: 3% nonfat dry milk in TBST. Detection: ECL Basic Kit. Exposure time: 1s.