

Anti-MRPS21 antibody (1-87) (STJ11105617)

GENERAL INFORMATION

| | |
|---------------|--------------------|
| Product Type | Primary antibodies |
| Applications | IHC-P/ELISA |
| Host / Source | Rabbit |
| Reactivity | Human/Mouse/Rat |

PRODUCT PROPERTIES

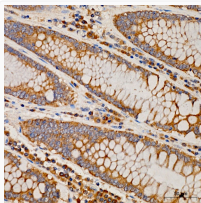
| | |
|---------------------|---|
| Clonality | Polyclonal |
| Concentration | Lot specific |
| Conjugation | Unconjugated |
| Purification | Affinity purification |
| Dilution Range | IHC-P:1:50-1:200 ELISA:Recommended starting concentration is 1 µg/mL. Please optimize the concentration based on your specific assay requirements. |
| Formulation | PBS with 0.05% Proclin300, 50% Glycerol, pH 7.3. |
| Isotype | IgG |
| Molecular Weight | Protein Mw: 10kDa Observed Mw: Refer to figures |
| Storage Instruction | Store at -20°C for up to 1 year from the date of receipt, and avoid repeat freeze-thaw cycles. |

TARGET INFORMATION

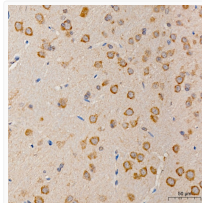
| | |
|--------------------|---|
| Gene ID | 54460 |
| Gene Symbol | MRPS21 |
| UniProt ID | R21_HUMAN |
| Immunogen Region | 1-87 |
| Immunogen Sequence | MAKHLKFIARTVMVQEGNVE SAYRTLNRILTMDGLIEDIK HRRYYEKPCRRQRESYERC RRIYNMEMARKINFLMRKNR ADPWQGC |
| Specificity | Recombinant fusion protein containing a sequence corresponding to amino acids 1-87 of human MRPS21 (NP_114107.2). |

ADDITIONAL INFORMATION

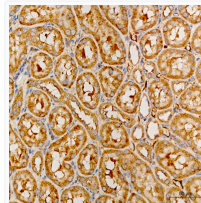
Note **STRICTLY FOR FURTHER SCIENTIFIC RESEARCH USE ONLY (RUO). MUST NOT TO BE USED IN DIAGNOSTIC OR THERAPEUTIC APPLICATIONS.**



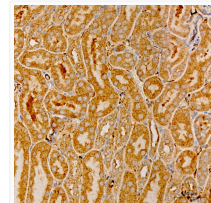
Immunohistochemistry analysis of MRPS21 in paraffin-embedded human colon tissue using MRPS21 Rabbit polyclonal antibody (STJ11105617) at a dilution of 1:200 (40x lens). High pressure antigen retrieval was performed with 0.01 M citrate buffer (pH 6.0) prior to immunohistochemistry staining.



Immunohistochemistry analysis of MRPS21 in paraffin-embedded rat brain tissue using MRPS21 Rabbit polyclonal antibody (STJ11105617) at a dilution of 1:200 (40x lens). High pressure antigen retrieval was performed with 0.01 M citrate buffer (pH 6.0) prior to immunohistochemistry staining.



Immunohistochemistry analysis of MRPS21 in paraffin-embedded rat kidney tissue using MRPS21 Rabbit polyclonal antibody (STJ11105617) at a dilution of 1:200 (40x lens). High pressure antigen retrieval was performed with 0.01 M citrate buffer (pH 6.0) prior to immunohistochemistry staining.



Immunohistochemistry analysis of MRPS21 in paraffin-embedded mouse kidney tissue using MRPS21 Rabbit polyclonal antibody (STJ11105617) at a dilution of 1:200 (40x lens). High pressure antigen retrieval was performed with 0.01 M citrate buffer (pH 6.0) prior to immunohistochemistry staining.