

Anti-ABCC3 antibody (855-954) (STJ11105616)

GENERAL INFORMATION

Product Type	Primary antibodies
Applications	IF/ICC/ELISA
Host / Source	Rabbit
Reactivity	Human

PRODUCT PROPERTIES

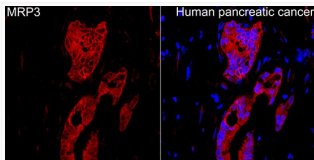
Clonality	Polyclonal
Concentration	Lot specific
Conjugation	Unconjugated
Purification	Affinity purification
Dilution Range	IF/ICC:1:50-1:200 ELISA:Recommended starting concentration is 1 µg/mL. Please optimize the concentration based on your specific assay requirements.
Formulation	PBS with 0.05% Proclin300, 50% Glycerol, pH 7.3.
Isotype	IgG
Molecular Weight	Protein Mw: 169kDa Observed Mw: Refer to figures
Storage Instruction	Store at -20°C for up to 1 year from the date of receipt, and avoid repeat freeze-thaw cycles.

TARGET INFORMATION

Gene ID	8714
Gene Symbol	ABCC3
UniProt ID	MRP3_HUMAN
Immunogen Region	855-954
Immunogen Sequence	DEDQGHLEDSWTALEGAEDK EALLIEDTLSNHTDLTDNDP VTYVVQKQFMRQLSALSSDG EGQGRPVPRRHLGPSEKVQV TEAKADGALTQEEKAAIGTV
Specificity	A synthetic peptide corresponding to a sequence within amino acids 855-954 of human MRP3 (NP_003777.2).

ADDITIONAL INFORMATION

Note STRICTLY FOR FURTHER SCIENTIFIC RESEARCH USE ONLY (RUO). MUST NOT TO BE USED IN DIAGNOSTIC OR THERAPEUTIC APPLICATIONS.



Immunofluorescence analysis of paraffin-embedded Human pancreatic cancer tissue using MRP3 Rabbit polyclonal antibody (STJ11105616) at a dilution of 1:100 (40x lens). Secondary antibody: Cy3 Goat Anti-Rabbit IgG (H+L) at 1:500 dilution. Blue: DAPI for nuclear staining. Perform high pressure antigen retrieval with 0.01 M citrate buffer (pH 6.0) prior to IF staining.