

Anti-MRPL9 antibody (53-267) (STJ11105615)

GENERAL INFORMATION

Product Type	Primary antibodies
Applications	WB/IF/ICC/ELISA
Host / Source	Rabbit
Reactivity	Human/Mouse/Rat

PRODUCT PROPERTIES

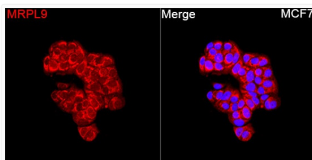
Clonality	Polyclonal
Concentration	Lot specific
Conjugation	Unconjugated
Purification	Affinity purification
Dilution Range	WB:1:500-1:1000 IF/CC:1:50-1:200 ELISA:Recommended starting concentration is 1 μ g/mL. Please optimize the concentration based on your specific assay requirements.
Formulation	PBS with 0.05% Proclin300, 50% Glycerol, pH 7.3.
Isotype	IgG
Molecular Weight	Protein Mw: 30kDa Observed Mw: 30kDa
Storage Instruction	Store at -20°C for up to 1 year from the date of receipt, and avoid repeat freeze-thaw cycles.

TARGET INFORMATION

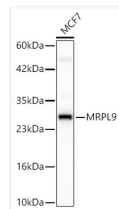
Gene ID	65005
Gene Symbol	MRPL9
UniProt ID	RM09_HUMAN
Immunogen Region	53-267
Immunogen Sequence	TVIVERWWKVLAGEGRKPR LHRHRVYKLVEDTKHRPKE NLELILTQSVENVGVRGDLV SVKKSGLGRNRLLPQGLAVYA SPENKLFEEKLLRQEGKL EKIQTKAGEATVKFLKSCRL EVGMKNNVKWELNPEIVARH FFKNLGVVAPHTLKLPEEP ITRWGEYWCEVTVNGLDTVR VPMSSVNFEPKPKTKRYKYWL AQQAAMAPTSPQI
Specificity	Recombinant Protein corresponding to a sequence within amino acids 53-267 of human MRPL9 (NP_113608.1).

ADDITIONAL INFORMATION

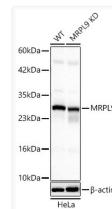
Note STRICTLY FOR FURTHER SCIENTIFIC RESEARCH USE ONLY (RUO). MUST NOT TO BE USED IN DIAGNOSTIC OR THERAPEUTIC APPLICATIONS.



Immunofluorescence analysis of MCF7 cells using [KD Validated] MRPL9 Rabbit polyclonal antibody (STJ11105615) at a dilution of 1:200 (40x lens). Secondary antibody: Cy3 Goat Anti-Rabbit IgG (H+L) at 1:500 dilution. Blue: DAPI for nuclear staining.



Western blot analysis of lysates from MCF7 cells using [KD Validated] MRPL9 Rabbit polyclonal antibody (STJ11105615) at 1:1000 dilution. Secondary antibody: HRP Goat Anti-Rabbit IgG (H+L) (STJS000856) at 1:10000 dilution. Lysates/proteins: 25 μ g per lane. Blocking buffer: 3% nonfat dry milk in TBST. Detection: ECL Basic Kit. Exposure time: 10s.



Western blot analysis of lysates from wild type (WT) and MRPL9 knockdown (KD) HeLa cells using [KD Validated] MRPL9 Rabbit polyclonal antibody (STJ11105615) at 1:1000 dilution. Secondary antibody:HRP Goat Anti-Rabbit IgG (H+L) (STJS000856) at 1:10000 dilution. Lysates/proteins: 25 μ g per lane. Blocking buffer: 3% nonfat dry milk in TBST. Detection: ECL Basic Kit. Exposure time: 10s.