

Anti-MRPS23 antibody (1-190) (STJ11105614)

GENERAL INFORMATION

Product Type	Primary antibodies
Applications	WB/IF/ICC/ELISA
Host / Source	Rabbit
Reactivity	Human

PRODUCT PROPERTIES

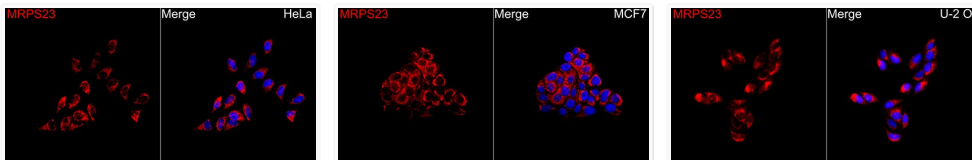
Clonality	Polyclonal
Concentration	Lot specific
Conjugation	Unconjugated
Purification	Affinity purification
Dilution Range	WB:1:500-1:1000 IF/CC:1:50-1:200 ELISA:Recommended starting concentration is 1 Mu g/mL. Please optimize the concentration based on your specific assay requirements.
Formulation	PBS with 0.05% Proclin300, 50% Glycerol, pH 7.3.
Isotype	IgG
Molecular Weight	Protein Mw: 22kDa Observed Mw: 23kDa
Storage Instruction	Store at -20°C for up to 1 year from the date of receipt, and avoid repeat freeze-thaw cycles.

TARGET INFORMATION

Gene ID	51649
Gene Symbol	MRPS23
UniProt ID	RT23_HUMAN
Immunogen Region	1-190
Immunogen Sequence	MAGSRLETVGSIFSRTLDLV RAGVLKEKPLWFDVYDAFPP LREPVFQRPVRYGKAKAPI QDIWYHEDRIRAKFYSVYGS GQRAFDLFPNFKSTCQRFV EKYTELQKLGETDEEKLVE TGKALLAEGVILRRVGEART QHGGSHVSRKSEHLSVRPQT ALEENETQKEVPQDQHLEAP ADQSKGLLPP
Specificity	Recombinant Protein corresponding to a sequence within amino acids 1-190 of human MRPS23 (NP_057154.2).

ADDITIONAL INFORMATION

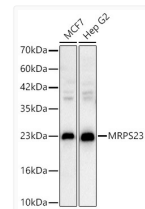
Note **STRICTLY FOR FURTHER SCIENTIFIC RESEARCH USE ONLY (RUO). MUST NOT TO BE USED IN DIAGNOSTIC OR THERAPEUTIC APPLICATIONS.**



Immunofluorescence analysis of HeLa cells using MRPS23 Rabbit polyclonal antibody (STJ11105614) at a dilution of 1:100 (40x lens). Secondary antibody: Cy3 Goat Anti-Rabbit IgG (H+L) at 1:500 dilution. Blue: DAPI for nuclear staining.

Immunofluorescence analysis of MCF7 cells using MRPS23 Rabbit polyclonal antibody (STJ11105614) at a dilution of 1:100 (40x lens). Secondary antibody: Cy3 Goat Anti-Rabbit IgG (H+L) at 1:500 dilution. Blue: DAPI for nuclear staining.

Immunofluorescence analysis of U-2 OS cells using MRPS23 Rabbit polyclonal antibody (STJ11105614) at a dilution of 1:100 (40x lens). Secondary antibody: Cy3 Goat Anti-Rabbit IgG (H+L) at 1:500 dilution. Blue: DAPI for nuclear staining.



Western blot analysis of various lysates using MRPS23 Rabbit polyclonal antibody (STJ11105614) at 1:1000 dilution. Secondary antibody: HRP Goat Anti-Rabbit IgG (H+L) (STJS000856) at 1:10000 dilution. Lysates/proteins: 25 Mu g per lane. Blocking buffer: 3 % nonfat dry milk in TBST. Detection: ECL Basic Kit. Exposure time: 1s.