

Anti-CHUK antibody (400-660) (STJ11105593)

GENERAL INFORMATION

Product Type	Primary antibodies
Applications	IF/ICC/ELISA
Host / Source	Rabbit
Reactivity	Human/Mouse

PRODUCT PROPERTIES

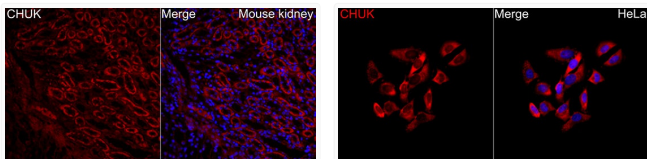
Clonality	Polyclonal
Concentration	Lot specific
Conjugation	Unconjugated
Purification	Affinity purification
Dilution Range	IF/ICC:1:50-1:200 ELISA:Recommended starting concentration is 1 µg/mL. Please optimize the concentration based on your specific assay requirements.
Formulation	PBS with 0.05% Proclin300, 50% Glycerol, pH 7.3.
Isotype	IgG
Molecular Weight	Protein Mw: 78kDa Observed Mw: Refer to figures
Storage Instruction	Store at -20°C for up to 1 year from the date of receipt, and avoid repeat freeze-thaw cycles.

TARGET INFORMATION

Immunogen Region	400-660
Immunogen Sequence	SRSLSDCVNYIVQDSKIQLP VTQLRKVWAEAVHYVSGLKE DYSRLFQGGRAAMLSLLRYN ANLTKMKNLISASQQLKAK LEFFRKSQQLDLERYSEQMT YGISSEKMLKAWKEMEEKAI HYSEVGVIGYLEDQIMSLHT EIMELQKSPYGRRQGDLMES LEQRAIDLKQLKHRPTDHS YSDSTEMVKIIVHTVQSQDR VLKELFGHLSKLLGCKQKII DLLPKVEVALSNIKEADNT
Specificity	Recombinant Protein corresponding to a sequence within amino acids 400-660 of rat CHUK (NP_001101058.1).

ADDITIONAL INFORMATION

Note **STRICTLY FOR FURTHER SCIENTIFIC RESEARCH USE ONLY (RUO). MUST NOT TO BE USED IN DIAGNOSTIC OR THERAPEUTIC APPLICATIONS.**



Immunofluorescence analysis of paraffin-embedded Mouse kidney tissue using CHUK Rabbit polyclonal antibody (STJ11105593) at a dilution of 1:100 (40x lens). Secondary antibody: Cy3 Goat Anti-Rabbit IgG (H+L) at 1:500 dilution. Blue: DAPI for nuclear staining. Perform high pressure antigen retrieval with 0.01 M citrate buffer (pH 6.0) prior to IF staining.

Immunofluorescence analysis of HeLa cells using CHUK Rabbit polyclonal antibody (STJ11105593) at a dilution of 1:100 (40x lens). Secondary antibody: Cy3 Goat Anti-Rabbit IgG (H+L) at 1:500 dilution. Blue: DAPI for nuclear staining.