

Anti-CFB antibody (26-764) (STJ11105589)

GENERAL INFORMATION

Product Type	Primary antibodies
Applications	WB/IF/ICC/ELISA
Host / Source	Rabbit
Reactivity	Human/Mouse

PRODUCT PROPERTIES

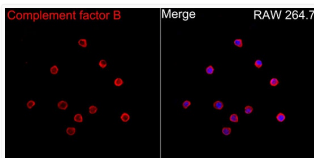
Clonality	Polyclonal
Concentration	Lot specific
Conjugation	Unconjugated
Purification	Affinity purification
Dilution Range	WB:1:500-1:1000 IF/CC:1:50-1:200 ELISA:Recommended starting concentration is 1 μ g/mL. Please optimize the concentration based on your specific assay requirements.
Formulation	PBS with 0.05% Proclin300, 50% Glycerol, pH 7.3.
Isotype	IgG
Molecular Weight	Protein Mw: 86kDa Observed Mw: 86kDa
Storage Instruction	Store at -20°C for up to 1 year from the date of receipt, and avoid repeat freeze-thaw cycles.

TARGET INFORMATION

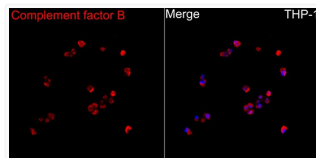
Gene ID	629
Gene Symbol	CFB
UniProt ID	CFAB_HUMAN
Immunogen Region	26-764
Immunogen Sequence	TPWSLARPQGSCSLEGVEIK GGSFRLLOEQQALEYVCPSPG FYYPVQTRTRCRSTGWSWSTL KTQDQKTVRKAECRAIHCPH PHDFENGGEYWRSPYINVSDEISFHCYDGYTLRGSANRRTG QVNGRWSGQTAICDNGAGYC SNPGIPIGTRKVGSGYRLED SVTYHCSRGLTLRGSQRRTG QEGGSWSGTEPSCQDSFMYD TPQEVAAEAFSLTETIEGV DAEDGHGPGGEQQRKIVLD
Specificity	Recombinant Protein corresponding to a sequence within amino acids 26-764 of human Complement factor B (NP_001701.2).

ADDITIONAL INFORMATION

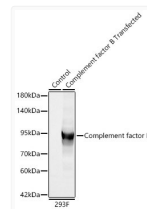
Note **STRICTLY FOR FURTHER SCIENTIFIC RESEARCH USE ONLY (RUO). MUST NOT TO BE USED IN DIAGNOSTIC OR THERAPEUTIC APPLICATIONS.**



Immunofluorescence analysis of RAW 264.7 cells using Complement factor B Rabbit polyclonal antibody (STJ11105589) at a dilution of 1:100 (40x lens). Secondary antibody: Cy3 Goat Anti-Rabbit IgG (H+L) at 1:500 dilution. Blue: DAPI for nuclear staining.



Immunofluorescence analysis of THP-1 cells using Complement factor B Rabbit polyclonal antibody (STJ11105589) at a dilution of 1:100 (40x lens). Secondary antibody: Cy3 Goat Anti-Rabbit IgG (H+L) at 1:500 dilution. Blue: DAPI for nuclear staining.



Western blot analysis of lysates from wild type (WT) and 293F cells transfected with Complement factor B using Complement factor B Rabbit polyclonal antibody (STJ11105589) at 1:1000 dilution. Secondary antibody: HRP Goat Anti-Rabbit IgG (H+L) (STJS000856) at 1:10000 dilution. Lysates/proteins: 30 μ g per lane. Blocking buffer: 3% nonfat dry milk in TBST. Detection: ECL Basic Kit. Exposure time: 10s.