

Anti-HSD17B13 antibody (34-300) (STJ11105579)

GENERAL INFORMATION

Product Type	Primary antibodies
Applications	WB/IF/ICC/ELISA
Host / Source	Rabbit
Reactivity	Human/Rat

PRODUCT PROPERTIES

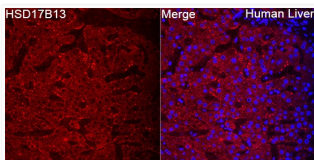
Clonality	Polyclonal
Concentration	Lot specific
Conjugation	Unconjugated
Purification	Affinity purification
Dilution Range	WB:1:1000-1:5000 IF/CC:1:100-1:500 ELISA:Recommended starting concentration is 1 Mu g/mL. Please optimize the concentration based on your specific assay requirements.
Formulation	PBS with 0.05% Proclin300, 50% Glycerol, pH 7.3.
Isotype	IgG
Molecular Weight	Protein Mw: 34kDa Observed Mw: 34kDa
Storage Instruction	Store at -20°C for up to 1 year from the date of receipt, and avoid repeat freeze-thaw cycles.

TARGET INFORMATION

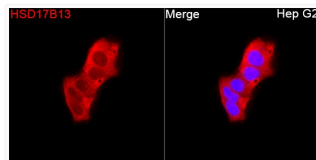
Gene ID	345275
Gene Symbol	HSD17B13
UniProt ID	DHB13_HUMAN
Immunogen Region	34-300
Immunogen Sequence	VAGEIVLITGAGHGIGRQTT YEFAKRQSLVLWDINKRGV EETAACRKLGVTAHAYVVD CSNREEIYRSLNQVKKEVDG VTIIVVNNAGTVYPADLLSTK DEEITKTFEVNLGHFWITK ALLPMMERNHGHIVTVASV CGHEGIPYLIPYCSSKFAAV GFHRGLTSELQALGKTGIK SCLCPVVFVNTGFTKNPSTRL WPVLETDEVVRSLLIDGILTN KKMIFVPSYINIFLRLQKF
Specificity	Recombinant Protein corresponding to a sequence within amino acids 34-300 of human HSD17B13 (NP_835236.2).

ADDITIONAL INFORMATION

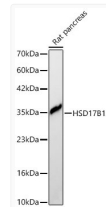
Note STRICTLY FOR FURTHER SCIENTIFIC RESEARCH USE ONLY (RUO). MUST NOT TO BE USED IN DIAGNOSTIC OR THERAPEUTIC APPLICATIONS.



Immunofluorescence analysis of paraffin-embedded Human liver using HSD17B13 Rabbit polyclonal antibody (STJ11105579) at a dilution of 1:200 (40x lens). Secondary antibody: Cy3 Goat Anti-Rabbit IgG (H+L) at 1:500 dilution. Blue: DAPI for nuclear staining.



Immunofluorescence analysis of Hep G2 cells using HSD17B13 Rabbit polyclonal antibody (STJ11105579) at a dilution of 1:200 (40x lens). Secondary antibody: Cy3 Goat Anti-Rabbit IgG (H+L) at 1:500 dilution. Blue: DAPI for nuclear staining.



Western blot analysis of lysates from Rat pancreas using HSD17B13 Rabbit polyclonal antibody (STJ11105579) at 1:2000 dilution. Secondary antibody: HRP Goat Anti-Rabbit IgG (H+L) (STJS000856) at 1:10000 dilution. Lysates/proteins: 25 Mu g per lane. Blocking buffer: 3% nonfat dry milk in TBST. Detection: ECL Basic Kit. Exposure time: 20s.