

Anti-SCD antibody (260-359) (STJ11105577)

GENERAL INFORMATION

Product Type	Primary antibodies
Applications	WB/IF/ICC/ELISA
Host / Source	Rabbit
Reactivity	Human/Mouse

PRODUCT PROPERTIES

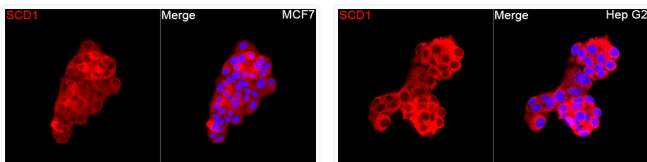
Clonality	Polyclonal
Concentration	Lot specific
Conjugation	Unconjugated
Purification	Affinity purification
Dilution Range	WB:1:500-1:1000 IF/CC:1:50-1:200 ELISA:Recommended starting concentration is 1 Mu g/mL. Please optimize the concentration based on your specific assay requirements.
Formulation	PBS with 0.09% Sodium Azide, 50% Glycerol, pH7.3.
Isotype	IgG
Molecular Weight	Protein Mw: 42kDa Observed Mw: 37kDa
Storage Instruction	Store at -20°C for up to 1 year from the date of receipt, and avoid repeat freeze-thaw cycles.

TARGET INFORMATION

Gene ID	6319
Gene Symbol	SCD
UniProt ID	SCD_HUMAN
Immunogen Region	260-359
Immunogen Sequence	ATWLVNSAAHLFGYRYPYDKN ISPRENILVSLGAVGEGFHN YHHSFPYDYSASEYRWHINF TFFFIDCMAALGLAYDRKKV SKAAILARIKRTGDGNYKSG
Specificity	A synthetic peptide corresponding to a sequence within amino acids 260-359 of human SCD (NP_005054.3).

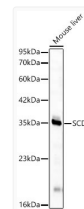
ADDITIONAL INFORMATION

Note STRICTLY FOR FURTHER SCIENTIFIC RESEARCH USE ONLY (RUO). MUST NOT TO BE USED IN DIAGNOSTIC OR THERAPEUTIC APPLICATIONS.

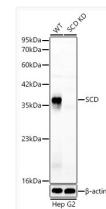


Immunofluorescence analysis of MCF7 cells using [KD Validated] SCD Rabbit polyclonal antibody (STJ11105577) at a dilution of 1:100 (40x lens). Secondary antibody: Cy3 Goat Anti-Rabbit IgG (H+L) at 1:500 dilution. Blue: DAPI for nuclear staining.

Immunofluorescence analysis of Hep G2 cells using [KD Validated] SCD Rabbit polyclonal antibody (STJ11105577) at a dilution of 1:100 (40x lens). Secondary antibody: Cy3 Goat Anti-Rabbit IgG (H+L) at 1:500 dilution. Blue: DAPI for nuclear staining.



Western blot analysis of lysates from Mouse liver using [KD Validated] SCD Rabbit polyclonal antibody (STJ11105577) at 1:1000 dilution. Secondary antibody: HRP Goat Anti-Rabbit IgG (H+L) (STJS000856) at 1:10000 dilution. Lysates/proteins: 25 Mu g per lane. Blocking buffer: 3% nonfat dry milk in TBST. Detection: ECL Basic Kit. Exposure time: 180s.



Western blot analysis of lysates from wild type (WT) and SCD knockdown (KD) Hep G2 cells using [KD Validated] SCD Rabbit polyclonal antibody (STJ11105577) at 1:1000 dilution. Secondary antibody: HRP Goat Anti-Rabbit IgG (H+L) (STJS000856) at 1:10000 dilution. Lysates/proteins: 25 Mu g per lane. Blocking buffer: 3% nonfat dry milk in TBST. Detection: ECL Basic Kit. Exposure time: 180s.