

Anti-MAPK8 antibody (1-100) (STJ11105575)

GENERAL INFORMATION

Product Type	Primary antibodies
Applications	WB/ELISA
Host / Source	Rabbit
Reactivity	Mouse/Rat

PRODUCT PROPERTIES

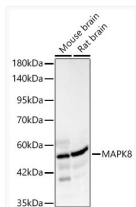
Clonality	Polyclonal
Concentration	Lot specific
Conjugation	Unconjugated
Purification	Affinity purification
Dilution Range	WB:1:400-1:500 ELISA:Recommended starting concentration is 1 µg/mL. Please optimize the concentration based on your specific assay requirements.
Formulation	PBS with 0.05% Proclin300, 50% Glycerol, pH 7.3.
Isotype	IgG
Molecular Weight	Protein Mw: 48kDa Observed Mw: 54kDa
Storage Instruction	Store at -20°C for up to 1 year from the date of receipt, and avoid repeat freeze-thaw cycles.

TARGET INFORMATION

Gene ID	5599
Gene Symbol	MAPK8
UniProt ID	MK08_HUMAN
Immunogen Region	1-100
Immunogen Sequence	MSRSKRDNFYSVEIGDSTF TVLKRYQNLKPIGSGAQGIV CAAYDAILERNVAIKKLSRP FQNQTHAKRAYRELVLKCV NHKNIIGLLNVFTFPQKSLEE
Specificity	A synthetic peptide corresponding to a sequence within amino acids 1-100 of human MAPK8 (NP_620637.1).

ADDITIONAL INFORMATION

Note STRICTLY FOR FURTHER SCIENTIFIC RESEARCH USE ONLY (RUO). MUST NOT TO BE USED IN DIAGNOSTIC OR THERAPEUTIC APPLICATIONS.



Western blot analysis of various lysates using MAPK8 Rabbit polyclonal antibody (STJ11105575) at 1:400 dilution. Secondary antibody:HRP Goat Anti-Rabbit IgG (H+L) (STJS000856) at 1:10000 dilution. Lysates/proteins: 25 µg per lane. Blocking buffer: 3 % nonfat dry milk in TBST. Detection:ECL Basic Kit. Exposure time: 90s.