

Anti-FCER2 antibody (48-321) (STJ11105562)

GENERAL INFORMATION

Product Type	Primary antibodies
Applications	WB/IHC-P/ELISA
Host / Source	Rabbit
Reactivity	Human/Mouse

PRODUCT PROPERTIES

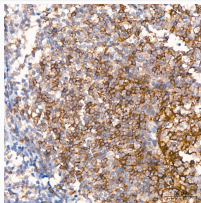
Clonality	Polyclonal
Concentration	Lot specific
Conjugation	Unconjugated
Purification	Affinity purification
Dilution Range	WB:1:500-1:1000 IHC-P:1:50-1:200 ELISA:Recommended starting concentration is 1 µg/mL. Please optimize the concentration based on your specific assay requirements.
Formulation	PBS with 0.05% Proclin300, 50% Glycerol, pH 7.3.
Isotype	IgG
Molecular Weight	Protein Mw: 36kDa Observed Mw: 38kDa
Storage Instruction	Store at -20°C for up to 1 year from the date of receipt, and avoid repeat freeze-thaw cycles.

TARGET INFORMATION

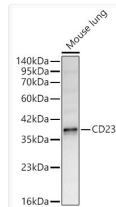
Gene ID	2208
Gene Symbol	FCER2
UniProt ID	FCER2_HUMAN
Immunogen Region	48-321
Immunogen Sequence	DTTQSLKQLEERAARNVSVQ SKNLESHHGDQMAQKSQSTQ ISQELEELRAEQRLKSDLELSWNLNGLQADLSSFKSQE LNERNEASDLLERLREEVTK LRMELVSSGFVCNTCPEKW INFQRKCYFVGKGTQWVHA RYACDDMEGQLVSIHSPEEQ DFLTKHASHTGWSWIGLRNLD LKGEFIWVDGSHVDYSNWAP GEPTSRSQGEDCVMMRGSGR WNDAFCDRKLGAWVCDRLA
Specificity	Recombinant fusion protein containing a sequence corresponding to amino acids 48-321 of human CD23 (NP_001993.2).

ADDITIONAL INFORMATION

Note STRICTLY FOR FURTHER SCIENTIFIC RESEARCH USE ONLY (RUO). MUST NOT TO BE USED IN DIAGNOSTIC OR THERAPEUTIC APPLICATIONS.



Immunohistochemistry analysis of CD23 in paraffin-embedded human tonsil tissue using CD23 Rabbit polyclonal antibody (STJ11105562) at a dilution of 1:100 (40x lens). High pressure antigen retrieval was performed with 0.01 M citrate buffer (pH 6.0) prior to immunohistochemistry staining.



Western blot analysis of lysates from Mouse lung using CD23 Rabbit polyclonal antibody (STJ11105562) at 1:1000 dilution. Secondary antibody: HRP Goat Anti-Rabbit IgG (H+L) (STJS000856) at 1:10000 dilution. Lysates/proteins: 25 µg per lane. Blocking buffer: 3% nonfat dry milk in TBST. Detection: ECL Basic Kit. Exposure time: 10s.