

Anti-PML+RARA antibody (500-600) (STJ11105558)

GENERAL INFORMATION

Product Type	Primary antibodies
Applications	IF/ICC/ELISA
Host / Source	Rabbit
Reactivity	Human/Rat

PRODUCT PROPERTIES

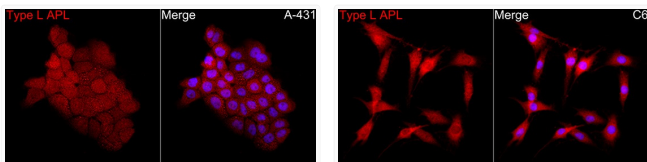
Clonality	Polyclonal
Concentration	Lot specific
Conjugation	Unconjugated
Purification	Affinity purification
Dilution Range	IF/ICC:1:50-1:200 ELISA:Recommended starting concentration is 1 µg/mL. Please optimize the concentration based on your specific assay requirements.
Formulation	PBS with 0.05% Proclin300, 50% Glycerol, pH 7.3.
Isotype	IgG
Molecular Weight	Protein Mw: 47-48kDa/62-97kDa/39kDa/50kDa Observed Mw: Refer to figures
Storage Instruction	Store at 20°C for up to 1 year from the date of receipt, and avoid repeat freeze-thaw cycles.

TARGET INFORMATION

Gene ID	5371 5914
Gene Symbol	PML RARA
UniProt ID	PML_HUMAN RARA_HUMAN
Immunogen Region	500-600
Immunogen Sequence	RLARSSPEQPRPSTSKAVSP PHLDGPPSPRSPVIGSEVFL PNSNHVASGAGEAERVVVI SSSESDAENSSSRELDSS SESSDLQLEGPSTLRVLDEN LMASNSSSCTPGGGHLNGY VPPPYAFFFPMLGGLSPPG ALTTLQHQLPVSGYSTPSA TIETQSSSSEIIVSPSPSP PLPRIYKPCFVCQDKSSGYH Y
Specificity	A synthetic peptide corresponding to a sequence within amino acids 500-600/1-100 of human PML+RARA (NP_150241.2/NP_000955.1).

ADDITIONAL INFORMATION

Note STRICTLY FOR FURTHER SCIENTIFIC RESEARCH USE ONLY (RUO). MUST NOT TO BE USED IN DIAGNOSTIC OR THERAPEUTIC APPLICATIONS.



Immunofluorescence analysis of A-431 cells using Type L APL Rabbit polyclonal antibody (STJ11105558) at a dilution of 1:100 (40x lens). Secondary antibody: Cy3 Goat Anti-Rabbit IgG (H+L) at 1:500 dilution. Blue: DAPI for nuclear staining.

Immunofluorescence analysis of C6 cells using Type L APL Rabbit polyclonal antibody (STJ11105558) at a dilution of 1:100 (40x lens). Secondary antibody: Cy3 Goat Anti-Rabbit IgG (H+L) at 1:500 dilution. Blue: DAPI for nuclear staining.