

## Anti-PTGR3 antibody (33-371) (STJ11105544)

### GENERAL INFORMATION

Product Type	Primary antibodies
Applications	WB/IHC-P/ELISA
Host / Source	Rabbit
Reactivity	Human/Mouse/Rat

### PRODUCT PROPERTIES

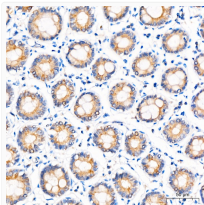
Clonality	Polyclonal
Concentration	Lot specific
Conjugation	Unconjugated
Purification	Affinity purification
Dilution Range	WB:1:500-1:1000 IHC-P:1:50-1:200 ELISA:Recommended starting concentration is 1 Mu g/mL. Please optimize the concentration based on your specific assay requirements.
Formulation	PBS with 0.05% Proclin300, 50% Glycerol, pH 7.3.
Isotype	IgG
Molecular Weight	Protein Mw: 40kDa Observed Mw: 40kDa
Storage Instruction	Store at -20°C for up to 1 year from the date of receipt, and avoid repeat freeze-thaw cycles.

### TARGET INFORMATION

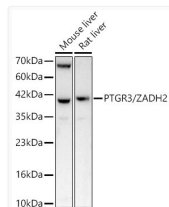
Gene ID	<a href="#">284273</a>
Gene Symbol	<a href="#">PTGR3</a>
UniProt ID	<a href="#">PTGR3_HUMAN</a>
Immunogen Region	33-371
Immunogen Sequence	MQKLVVTRLSPNFREAVTLS RDCPVPLPGDGLLVRNRFV GVNASDINYSAGRYDPSVKP PFDIGFEGIGEVVALGLSAS ARYTVGQAVAYMAPGSFAEY TVVPASIAATPVPSVKPEYLT LLVSGTTAYISLKLGLLSE GKKVLVTAAGGTGQFAMQL SKKAKCHVIGTCSSEKSAF LKSLGCDRPNYKTEPVGTV LKQEYPEGVDVYVESVGGAM FDLAVDALATKGRLLVIGF
Specificity	Recombinant Protein corresponding to a sequence within amino acids 33-371 of human PTGR3/ZADH2 (NP_787103.1).

### ADDITIONAL INFORMATION

Note STRICTLY FOR FURTHER SCIENTIFIC RESEARCH USE ONLY (RUO). MUST NOT TO BE USED IN DIAGNOSTIC OR THERAPEUTIC APPLICATIONS.



Immunohistochemistry analysis of PTGR3/ZADH2 in paraffin-embedded human colon tissue using PTGR3/ZADH2 Rabbit polyclonal antibody (STJ11105544) at a dilution of 1:100 (40x lens). High pressure antigen retrieval was performed with 0.01 M citrate buffer (pH 6.0) prior to immunohistochemistry staining.



Western blot analysis of various lysates using PTGR3/ZADH2 Rabbit polyclonal antibody (STJ11105544) at 1:1000 dilution. Secondary antibody: HRP Goat Anti-Rabbit IgG (H+L) (STJS000856) at 1:10000 dilution. Lysates/proteins: 25 Mu g per lane. Blocking buffer: 3% nonfat dry milk in TBST. Detection: ECL Basic Kit. Exposure time: 20s.