

Anti-GDF15 antibody (197-308) (STJ11105532)

GENERAL INFORMATION

Product Type	Primary antibodies
Applications	IF/ICC/ELISA
Host / Source	Rabbit
Reactivity	Human

PRODUCT PROPERTIES

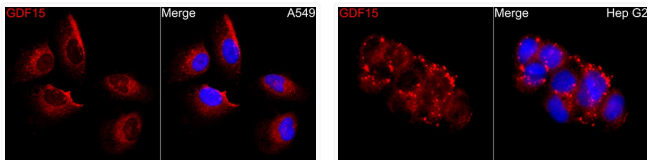
Clonality	Polyclonal
Concentration	Lot specific
Conjugation	Unconjugated
Purification	Affinity purification
Dilution Range	IF/ICC:1:50-1:200 ELISA:Recommended starting concentration is 1 µg/mL. Please optimize the concentration based on your specific assay requirements.
Formulation	PBS with 0.05% Proclin300, 50% Glycerol, pH 7.3.
Isotype	IgG
Molecular Weight	Protein Mw: 34kDa Observed Mw: Refer to figures
Storage Instruction	Store at -20°C for up to 1 year from the date of receipt, and avoid repeat freeze-thaw cycles.

TARGET INFORMATION

Gene ID	9518
Gene Symbol	GDF15
UniProt ID	GDF15_HUMAN
Immunogen Region	197-308
Immunogen Sequence	ARNGDHCPLGPRCCRLHTV RASLEDLGWADWVLSPREVQ VTMCGACPSQFRAANMHAQ IKTSLHRLKPDTPAPCCVP ASYNPMVLIQKTDGTGVSQT YDDLAKDCHCI
Specificity	Recombinant fusion protein containing a sequence corresponding to amino acids 197-308 of human GDF15 (NP_004855.2).

ADDITIONAL INFORMATION

Note STRICTLY FOR FURTHER SCIENTIFIC RESEARCH USE ONLY (RUO). MUST NOT TO BE USED IN DIAGNOSTIC OR THERAPEUTIC APPLICATIONS.



Immunofluorescence analysis of A549 cells using GDF15 Rabbit polyclonal antibody (STJ11105532) at a dilution of 1:100 (40x lens). Secondary antibody: Cy3 Goat Anti-Rabbit IgG (H+L) at 1:500 dilution. Blue: DAPI for nuclear staining.

Immunofluorescence analysis of Hep G2 cells using GDF15 Rabbit polyclonal antibody (STJ11105532) at a dilution of 1:100 (40x lens). Secondary antibody: Cy3 Goat Anti-Rabbit IgG (H+L) at 1:500 dilution. Blue: DAPI for nuclear staining.