

## Anti-CBX7 antibody (162-251) (STJ11105531)

### GENERAL INFORMATION

Product Type	Primary antibodies
Applications	WB
Host / Source	Rabbit
Reactivity	Human

### PRODUCT PROPERTIES

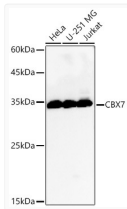
Clonality	Polyclonal
Concentration	Lot specific
Conjugation	Unconjugated
Purification	Affinity purification
Dilution Range	WB:1:500-1:1000
Formulation	PBS with 0.05% Proclin300, 50% Glycerol, pH 7.3.
Isotype	IgG
Molecular Weight	Protein Mw: 28kDa Observed Mw: 35kDa
Storage Instruction	Store at -20°C for up to 1 year from the date of receipt, and avoid repeat freeze-thaw cycles.

### TARGET INFORMATION

Gene ID	<a href="#">23492</a>
Gene Symbol	<a href="#">CBX7</a>
UniProt ID	<a href="#">CBX7_HUMAN</a>
Immunogen Region	162-251
Immunogen Sequence	NLESHSHRRELFQEPAPD VLQAAGEWEPAAQPPEEEAD ADLAEGPPWPALPSSEVT VTDITANSITVTFREAQAAE GFFRDRSGKF
Specificity	Recombinant fusion protein containing a sequence corresponding to amino acids 162-251 of human CBX7 (NP_783640.1).

### ADDITIONAL INFORMATION

Note STRICTLY FOR FURTHER SCIENTIFIC RESEARCH USE ONLY (RUO). MUST NOT TO BE USED IN DIAGNOSTIC OR THERAPEUTIC APPLICATIONS.



Western blot analysis of various lysates using CBX7 Rabbit polyclonal antibody (STJ11105531) at 1:1000 dilution. Secondary antibody:HRP Goat Anti-Rabbit IgG (H+L) (STJS000856) at 1:10000 dilution. Lysates/ proteins: 25  $\mu$ g per lane. Blocking buffer: 3 % nonfat dry milk in TBST. Detection:ECL Basic Kit. Exposure time: 90s.