

Anti-LHCGR antibody (200-300) (STJ11105523)

GENERAL INFORMATION

Product Type	Primary antibodies
Applications	WB/IF/ICC/ELISA
Host / Source	Rabbit
Reactivity	Mouse

PRODUCT PROPERTIES

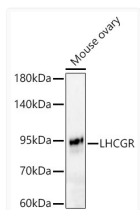
Clonality	Polyclonal
Concentration	Lot specific
Conjugation	Unconjugated
Purification	Affinity purification
Dilution Range	WB:1:1000-1:5000 IF/CC:1:50-1:200 ELISA:Recommended starting concentration is 1 μ g/mL. Please optimize the concentration based on your specific assay requirements.
Formulation	PBS with 0.05% Proclin300, 50% Glycerol, pH 7.3.
Isotype	IgG
Molecular Weight	Protein Mw: 71kDa/78kDa Observed Mw: 94kDa
Storage Instruction	Store at -20°C for up to 1 year from the date of receipt, and avoid repeat freeze-thaw cycles.

TARGET INFORMATION

Gene ID	3973
Gene Symbol	LHCGR
UniProt ID	LSHR_HUMAN
Immunogen Region	200-300
Immunogen Sequence	TSLELKENVHLEKMHNGAFR GATGPKTLDISSTKLQALPS YGLESIQRLIATSSYSYSLKKL PSRETFVNLLEATLTYP SHC CAFRNLP TKEQNF SHSISEN F
Specificity	A synthetic peptide corresponding to a sequence within amino acids 200-300 of human LHCGR (NP_000224.2).

ADDITIONAL INFORMATION

Note STRICTLY FOR FURTHER SCIENTIFIC RESEARCH USE ONLY (RUO). MUST NOT TO BE USED IN DIAGNOSTIC OR THERAPEUTIC APPLICATIONS.



Western blot analysis of lysates from Mouse ovary using LHCGR Rabbit polyclonal antibody (STJ11105523) at 1:2000 dilution. Secondary antibody: HRP Goat Anti-Rabbit IgG (H+L) (STJS000856) at 1:10000 dilution. Lysates/proteins: 25 μ g per lane. Blocking buffer: 3% nonfat dry milk in TBST. Detection: ECL Basic Kit. Exposure time: 60s.