

Anti-RPA2 antibody (1-270) (STJ11105520)

GENERAL INFORMATION

Product Type	Primary antibodies
Applications	WB/IHC-P/IF/ICC/ELISA
Host / Source	Rabbit
Reactivity	Human

PRODUCT PROPERTIES

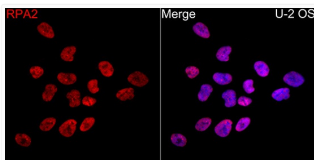
Clonality	Polyclonal
Concentration	Lot specific
Conjugation	Unconjugated
Purification	Affinity purification
Dilution Range	WB:1:1000-1:5000 IHC-P:1:100-1:500 IF/ICC:1:100-1:500 ELISA:Recommended starting concentration is 1 μ g/mL. Please optimize the concentration based on your specific assay requirements.
Formulation	PBS with 0.05% Proclin300, 50% Glycerol, pH 7.3.
Isotype	IgG
Molecular Weight	Protein Mw: 29kDa/30kDa/38kDa Observed Mw: 35kDa
Storage Instruction	Store at -20°C for up to 1 year from the date of receipt, and avoid repeat freeze-thaw cycles.

TARGET INFORMATION

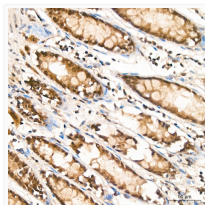
Gene ID	6118
Gene Symbol	RPA2
UniProt ID	RFA2_HUMAN
Immunogen Region	1-270
Immunogen Sequence	MWNSGFESYGSSSYGGAGGY TQSPGGFGSPAPSQAEEKSR ARAQHIVPCTISQLLSATLV DEVFRIGNVEISQVTIVGII RHAEKAPTNIYKIDDMTAA PMDVRQWVDTDDTSSSENTVV PPETYVKVAGHLRSFQNKKS LVAFKIMPLEDMNEFTTHIL EVINAHMVLKANSQPSAGR APISNPGMSEAGNFGGNSFM PANGLTVAQNQVLNLKACR RPEGLNFQDLKKNLKHMSV
Specificity	Recombinant Protein corresponding to a sequence within amino acids 1-270 of human RPA2 (NP_002937.1).

ADDITIONAL INFORMATION

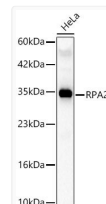
Note STRICTLY FOR FURTHER SCIENTIFIC RESEARCH USE ONLY (RUO). MUST NOT TO BE USED IN DIAGNOSTIC OR THERAPEUTIC APPLICATIONS.



Immunofluorescence analysis of U-2 OS cells using RPA2 Rabbit polyclonal antibody (STJ11105520) at a dilution of 1:200 (40x lens). Secondary antibody: Cy3 Goat Anti-Rabbit IgG (H+L) at 1:500 dilution. Blue: DAPI for nuclear staining.



Immunohistochemistry analysis of RPA2 in paraffin-embedded human colon tissue using RPA2 Rabbit polyclonal antibody (STJ11105520) at a dilution of 1:100 (40x lens). High pressure antigen retrieval was performed with 0.01 M citrate buffer (pH 6.0) prior to immunohistochemistry staining.



Western blot analysis of lysates from HeLa cells using RPA2 Rabbit polyclonal antibody (STJ11105520) at 1:2000 dilution. Secondary antibody: HRP Goat Anti-Rabbit IgG (H+L) (STJS000856) at 1:10000 dilution. Lysates/proteins: 25 μ g per lane. Blocking buffer: 3% nonfat dry milk in TBST. Detection: ECL Basic Kit. Exposure time: 20s.